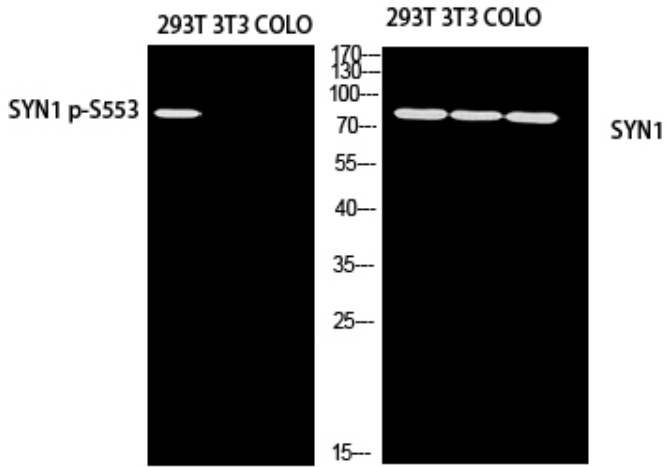


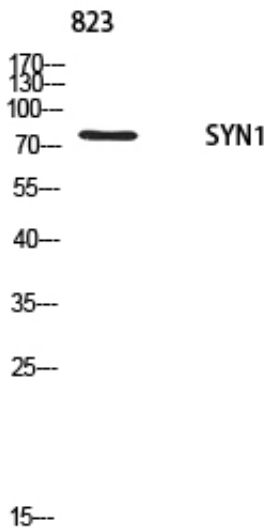
Synapsin-1 Polyclonal Antibody

Catalog_no :	AT5737
Applications :	WB,ELISA
Reactivity :	Human,Mouse,Rat
Category :	抗原抗体
Size :	100µg/50µg/20µg
Gene_name :	SYN1
Protein_name :	Synapsin-1
Humangene_id :	6853
Humanswissprot_no :	P17600
Immunogen :	Synthesized peptide derived from the Internal region of human Synapsin-1.
Specificity :	Synapsin-1 Polyclonal Antibody detects endogenous levels of Synapsin-1 protein.
Formulation :	Liquid in PBS containing 50% glycerol, 0.5% BSA and 0.02% sodium azide.
Source :	Rabbit
Dilution :	Western Blot: 1/500 - 1/2000. ELISA: 1/10000. Not yet tested in other applications.
Purification :	The antibody was affinity-purified from rabbit antiserum by affinity-chromatography using epitope-specific immunogen.
Concentration :	1 mg/ml
Storage_stability :	-20°C/1 year
Msds :	MSDS_Antibody.pdf
Other_name :	SYN1; Synapsin-1; Brain protein 4.1; Synapsin I
Molecular Weight :	75KD

Product Images



Western blot analysis of 293T 3T3 COLO using SYN1 antibody. Antibody was diluted at 1:1000. Secondary antibody was diluted at 1:20000



Western blot analysis of 823 using SYN1 antibody. Antibody was diluted at 1:1000. Secondary antibody was diluted at 1:20000

Western blot analysis of 293T 3T3 COLO using SYN1 antibody. Antibody was diluted at 1:1000. Secondary antibody was diluted at 1:20000

