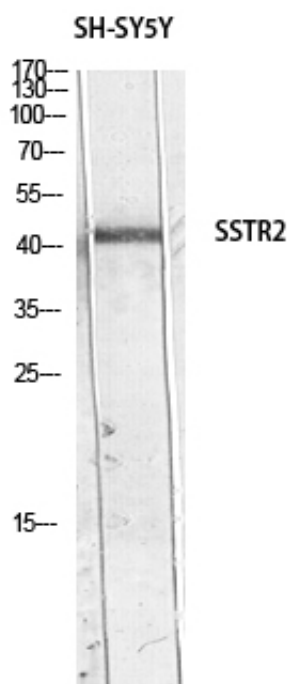


## SSTR2 Polyclonal Antibody

Catalog_no :	AT5740
Applications :	WB,ELISA
Reactivity :	Human,Mouse,Rat
Category :	抗原抗体
Size :	100µg/50µg/20µg
Gene_name :	SSTR2
Protein_name :	somatostatin receptor 2
Humangene_id :	<a href="#">6752</a>
Humanswissprot_no :	<a href="#">P30874</a>
Immunogen :	The antiserum was produced against synthesized peptide derived from the Internal region of human SSTR2. AA range:220-270
Specificity :	SSTR2 Polyclonal Antibody detects endogenous levels of somatostatin receptor 2
Formulation :	Liquid in PBS containing 50% glycerol, 0.5% BSA and 0.02% sodium azide.
Source :	Rabbit
Dilution :	Western Blot: 1/500 - 1/2000. ELISA: 1/10000. Not yet tested in other applications.
Purification :	The antibody was affinity-purified from rabbit antiserum by affinity-chromatography using epitope-specific immunogen.
Concentration :	1 mg/ml
Storage_stability :	-20°C/1 year
Msds :	MSDS_Antibody.pdf
Other_name :	Somatostatin receptor type 2 (SS-2-R) (SS2-R) (SS2R) (SRIF-1)
Molecular Weight :	40KD

## Product Images



Western blot analysis of SH-SY5Y lysis using SSTR2 antibody. Antibody was diluted at 1:500. Secondary antibody was diluted at 1:20000