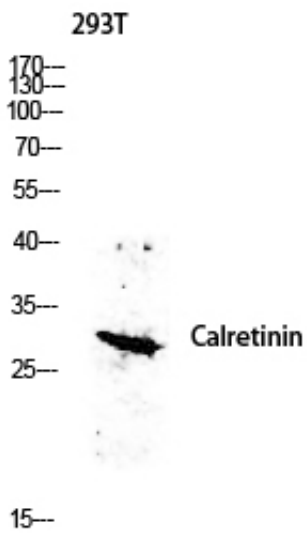




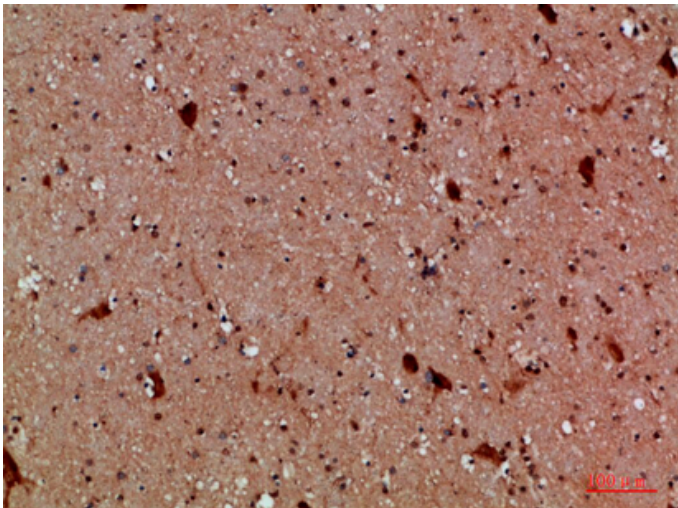
## Calretinin Polyclonal Antibody

Catalog_no :	AT5741
Applications :	WB,IHC-p,ELISA
Reactivity :	Human,Mouse,Rat
Category :	抗原抗体
Size :	100µg/50µg/20µg
Gene_name :	CALB2
Protein_name :	calbindin 2
Humangene_id :	<a href="#">794</a>
Humanswissprot_no :	<a href="#">P22676</a>
Immunogen :	Synthesized peptide derived from calbindin 2 at AA range: 191-240
Specificity :	Calretinin Polyclonal Antibody detects endogenous levels of calbindin 2
Formulation :	Liquid in PBS containing 50% glycerol, 0.5% BSA and 0.02% sodium azide.
Source :	Rabbit
Dilution :	Western Blot: 1/500 - 1/2000. ELISA: 1/10000. Not yet tested in other applications.
Purification :	The antibody was affinity-purified from rabbit antiserum by affinity-chromatography using epitope-specific immunogen.
Concentration :	1 mg/ml
Storage_stability :	-20°C/1 year
Msds :	<a href="#">MSDS_Antibody.pdf</a>
Other_name :	Calretinin (CR) (29 kDa calbindin)
Molecular Weight :	32KD

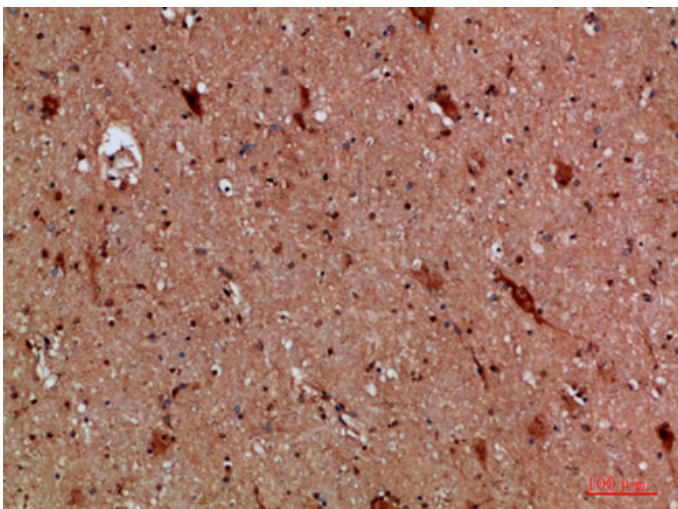
## Product Images



Western blot analysis of 293T lysis using CALB2 antibody. Antibody was diluted at 1:500. Secondary antibody was diluted at 1:20000



Immunohistochemical analysis of paraffin-embedded human-brain, antibody was diluted at 1:200



Immunohistochemical analysis of paraffin-embedded human-brain, antibody was diluted at 1:200



**专注二抗产品**

Biodragon旗下品牌

---