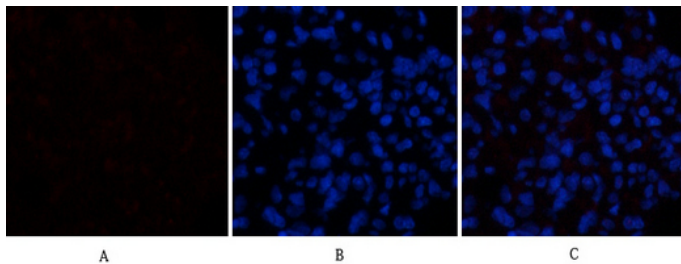




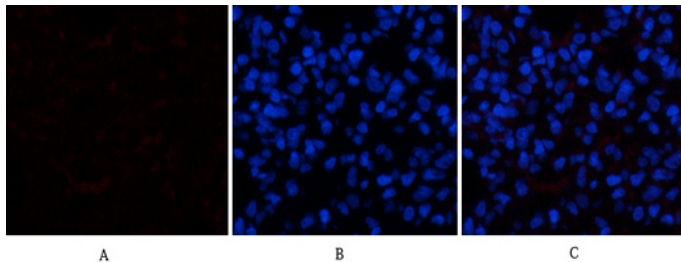
Caspase-1 Polyclonal Antibody

Catalog_no :	<u>AT5743</u>
Applications :	<u>IF,WB,IHC-p,ELISA</u>
Reactivity :	<u>Human,Rat</u>
Category :	<u>抗原抗体</u>
Size :	<u>100µg/50µg/20µg</u>
Gene_name :	<u>CASP1 IL1BC IL1BCE</u>
Protein_name :	<u>Caspase-1</u>
Humangene_id :	<u>834</u>
Humanswissprot_no :	<u>P29466</u>
Immunogen :	<u>The antiserum was produced against synthesized peptide derived from the C-terminal region of human CASP1. AA range:350-400</u>
Specificity :	<u>Caspase-1 Polyclonal Antibody detects endogenous levels of Caspase-1</u>
Formulation :	<u>Liquid in PBS containing 50% glycerol, 0.5% BSA and 0.02% sodium azide.</u>
Source :	<u>Rabbit</u>
Dilution :	<u>IF: 1:50-200 WB 1:500-2000, IHC 1:50-300, ELISA 1:10000-20000</u>
Purification :	<u>The antibody was affinity-purified from rabbit antiserum by affinity-chromatography using epitope-specific immunogen.</u>
Concentration :	<u>1 mg/ml</u>
Storage_stability :	<u>-20°C/1 year</u>
Msds :	<u>MSDS_Antibody.pdf</u>
Other_name :	<u>caspase 1, apoptosis-related cysteine peptidase (interleukin 1, beta, convertase)</u>
Molecular Weight :	<u>35KD</u>

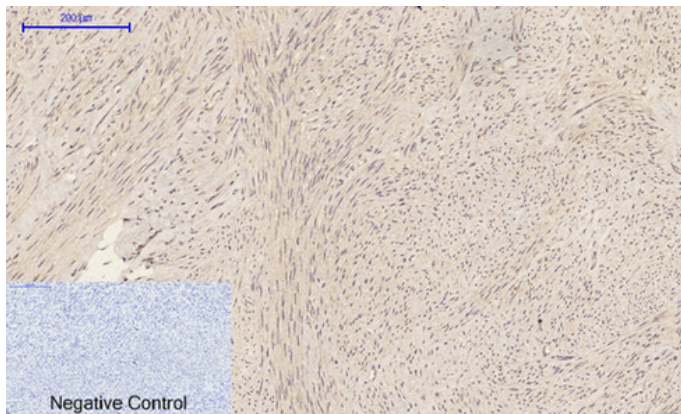
Product Images



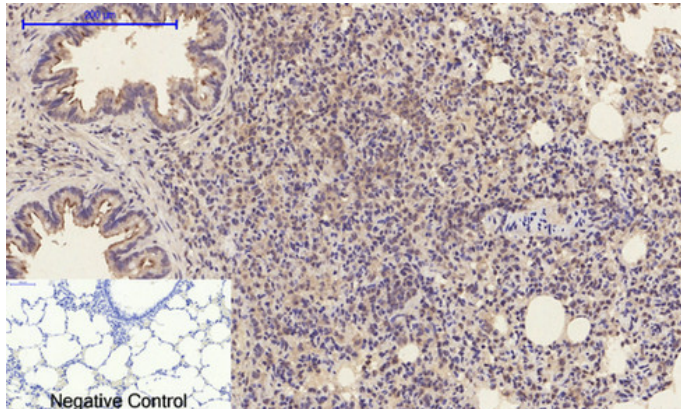
Immunofluorescence analysis of rat-lung tissue. 1,Caspase-1 Polyclonal Antibody(red) was diluted at 1:200(4°C,overnight). 2, Cy3 labeled Secondary antibody was diluted at 1:300(room temperature, 50min).3, Picture B: DAPI(blue) 10min. Picture A:Target. Picture B: DAPI. Picture C: merge of A+B



Immunofluorescence analysis of rat-lung tissue. 1,Caspase-1 Polyclonal Antibody(red) was diluted at 1:200(4°C,overnight). 2, Cy3 labeled Secondary antibody was diluted at 1:300(room temperature, 50min).3, Picture B: DAPI(blue) 10min. Picture A:Target. Picture B: DAPI. Picture C: merge of A+B

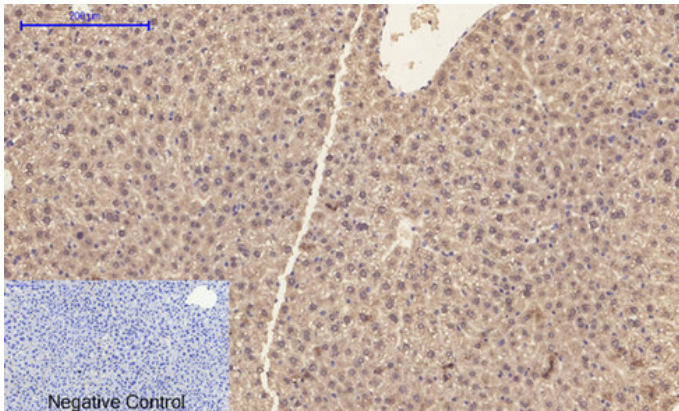
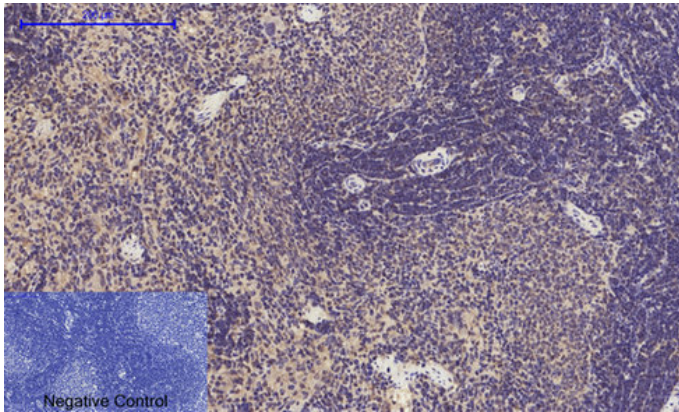


Immunohistochemical analysis of paraffin-embedded Human-uterus tissue. 1,Caspase-1 Polyclonal Antibody was diluted at 1:200(4°C,overnight). 2, Sodium citrate pH 6.0 was used for antibody retrieval(>98°C,20min). 3,Secondary antibody was diluted at 1:200(room temperature, 30min). Negative control was used by secondary antibody only.

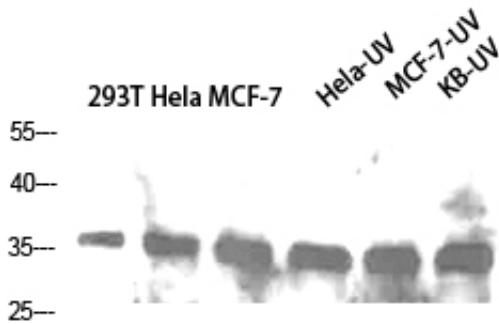


Immunohistochemical analysis of paraffin-embedded Rat-lung tissue. 1,Caspase-1 Polyclonal Antibody was diluted at 1:200(4°C,overnight). 2, Sodium citrate pH 6.0 was used for antibody retrieval(>98°C,20min). 3,Secondary antibody was diluted at 1:200(room temperature, 30min). Negative control was used by secondary antibody only.

Immunohistochemical analysis of paraffin-embedded Rat-spleen tissue. 1,Caspase-1 Polyclonal Antibody was diluted at 1:200(4°C,overnight). 2, Sodium citrate pH 6.0 was used for antibody retrieval(>98°C,20min). 3,Secondary antibody was diluted at 1:200(room temperature, 30min). Negative control was used by secondary antibody only.

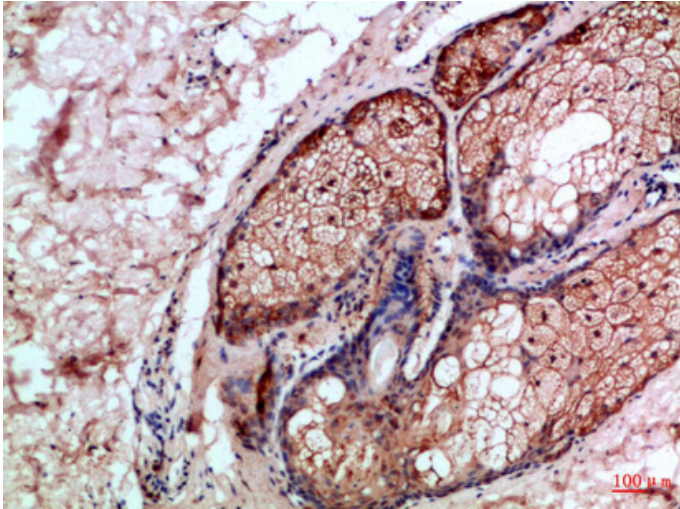


Immunohistochemical analysis of paraffin-embedded Mouse-liver tissue. 1, Caspase-1 Polyclonal Antibody was diluted at 1:200(4°C, overnight). 2, Sodium citrate pH 6.0 was used for antibody retrieval(>98°C, 20min). 3, Secondary antibody was diluted at 1:200(room temperature, 30min). Negative control was used by secondary antibody only.

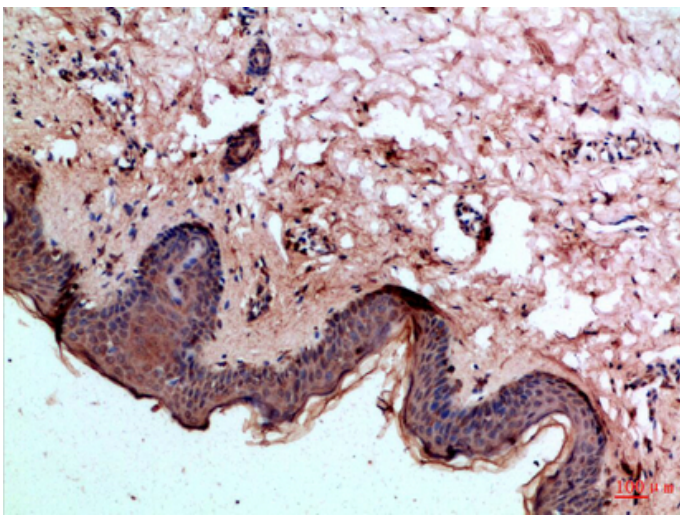


Western Blot analysis of 293T HeLa MCF-7 HeLa-UV MCF-7-UV KB-UV cells using Caspase-1 Polyclonal Antibody diluted at 1:1000. Secondary antibody was diluted at 1:20000

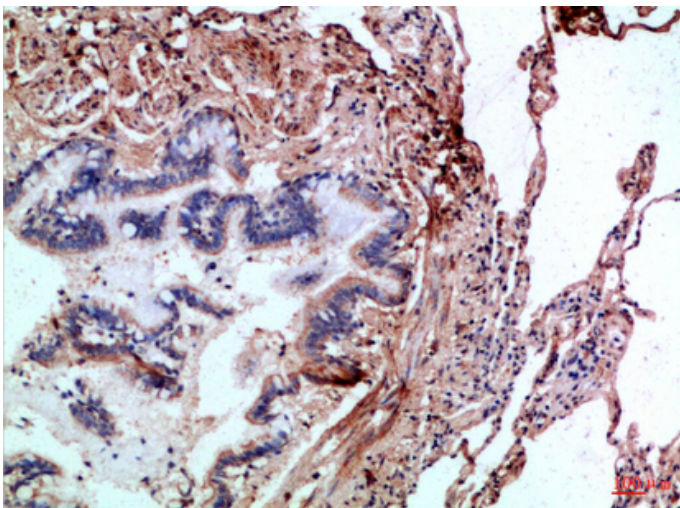
Immunohistochemical analysis of paraffin-embedded Human-skin, antibody was diluted at 1:100



Immunohistochemical analysis of paraffin-embedded Human-skin, antibody was diluted at 1:100



Immunohistochemical analysis of paraffin-embedded Human-lung, antibody was diluted at 1:100



Immunohistochemical analysis of paraffin-embedded Human-lung, antibody was diluted at 1:100

