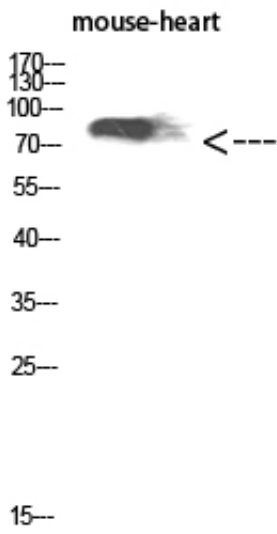


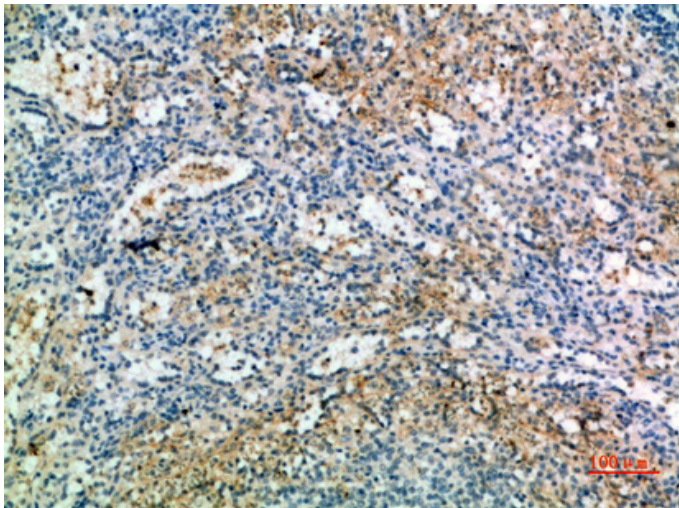
## CD238 Polyclonal Antibody

Catalog_no :	AT5748
Applications :	WB,ELISA
Reactivity :	Human
Category :	抗原抗体
Size :	100µg/50µg/20µg
Gene_name :	KEL
Protein_name :	CD238
Humangene_id :	<a href="#">3792</a>
Humanswissprot_no :	<a href="#">P23276</a>
Immunogen :	The antiserum was produced against synthesized peptide derived from the Internal region of human KEL. AA range:351-400
Specificity :	CD238 Polyclonal Antibody detects endogenous levels of CD238
Formulation :	Liquid in PBS containing 50% glycerol, 0.5% BSA and 0.02% sodium azide.
Source :	Rabbit
Dilution :	WB 1:500-2000, ELISA 1:10000-20000
Purification :	The antibody was affinity-purified from rabbit antiserum by affinity-chromatography using epitope-specific immunogen.
Concentration :	1 mg/ml
Storage_stability :	-20°C/1 year
Msds :	MSDS_Antibody.pdf
Other_name :	Kell blood group, metallo-endopeptidase
Molecular Weight :	82KD

## Product Images



Western Blot analysis of mouse-heart cells using CD238 Polyclonal Antibody diluted at 1:1000. Secondary antibody was diluted at 1:20000



Immunohistochemical analysis of paraffin-embedded human-spleen, antibody was diluted at 1:200