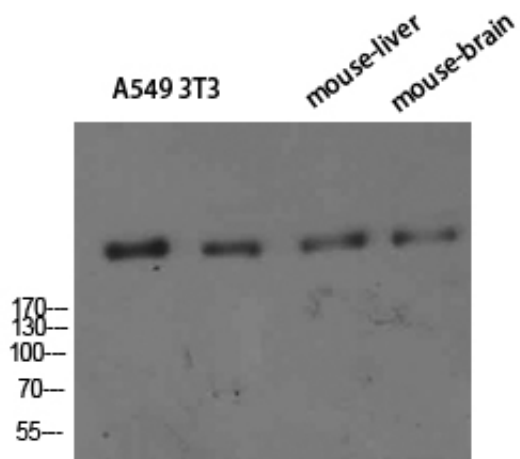


CD35 Polyclonal Antibody

Catalog_no :	AT5749
Applications :	WB,ELISA
Reactivity :	Human
Category :	抗原抗体
Size :	100µg/50µg/20µg
Protein_name :	CD35
Humangene_id :	1378
Humanswissprot_no :	P17927/Q2VPA4
Immunogen :	The antiserum was produced against synthesized peptide derived from the Internal region of human CR1/CR1L. AA range:300-350 & 740-790
Specificity :	CD35 Polyclonal Antibody detects endogenous levels of CD35
Formulation :	Liquid in PBS containing 50% glycerol, 0.5% BSA and 0.02% sodium azide.
Source :	Rabbit
Dilution :	WB 1:500-2000, ELISA 1:10000-20000
Purification :	The antibody was affinity-purified from rabbit antiserum by affinity-chromatography using epitope-specific immunogen.
Concentration :	1 mg/ml
Storage_stability :	-20°C/1 year
Msds :	MSDS_Antibody.pdf
Other_name :	complement component (3b/4b) receptor 1/2 (Knops blood group)
Molecular Weight :	220KD

Product Images



Western Blot analysis of A549 3T3 mouse-liver mouse-brain cells using CD35 Polyclonal Antibody diluted at 1:800. Secondary antibody was diluted at 1:20000