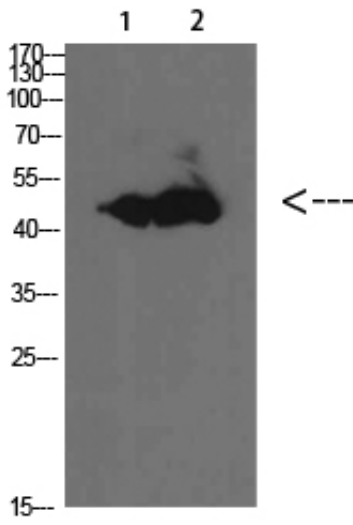




BMP-10 Polyclonal Antibody

Catalog_no :	AT5750
Applications :	WB,ELISA
Reactivity :	Human,Mouse,Rat
Category :	抗原抗体
Size :	100µg/50µg/20µg
Gene_name :	BMP10
Protein_name :	BMP-10
Humangene_id :	27302
Humanswissprot_no :	O95393
Immunogen :	Synthesized peptide derived from BMP-10 at AA range: 361-410
Specificity :	BMP-10 Polyclonal Antibody detects endogenous levels of BMP-10
Formulation :	Liquid in PBS containing 50% glycerol, 0.5% BSA and 0.02% sodium azide.
Source :	Rabbit
Dilution :	WB 1:500-2000, ELISA 1:10000-20000
Purification :	The antibody was affinity-purified from rabbit antiserum by affinity-chromatography using epitope-specific immunogen.
Concentration :	1 mg/ml
Storage_stability :	-20°C/1 year
Msds :	MSDS_Antibody.pdf
Other_name :	bone morphogenetic protein 10
Molecular Weight :	48KD

Product Images



1	mouse-lung
2	mouse-brain

Western Blot analysis of mouse-brain mouse-lung cells using BMP-10 Polyclonal Antibody diluted at 1:1000. Secondary antibody was diluted at 1:20000