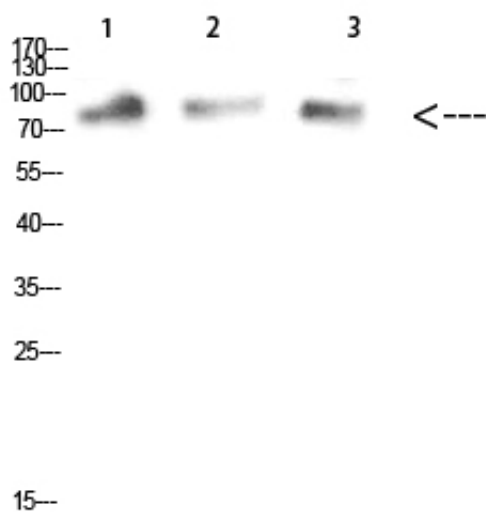


MUM1 Polyclonal Antibody

Catalog_no :	AT5753
Applications :	WB,ELISA
Reactivity :	Human,Mouse,Rat
Category :	抗原抗体
Size :	100µg/50µg/20µg
Gene_name :	MUM1 EXPAND1
Protein_name :	MUM1
Humangene_id :	84939
Humanswissprot_no :	Q2TAK8
Immunogen :	The antiserum was produced against synthesized peptide derived from the C-terminal region of human MUM1. AA range:661-710
Specificity :	MUM1 Polyclonal Antibody detects endogenous levels of MUM1
Formulation :	Liquid in PBS containing 50% glycerol, 0.5% BSA and 0.02% sodium azide.
Source :	Rabbit
Dilution :	WB 1:500-2000, ELISA 1:10000-20000
Purification :	The antibody was affinity-purified from rabbit antiserum by affinity-chromatography using epitope-specific immunogen.
Concentration :	1 mg/ml
Storage_stability :	-20°C/1 year
Msds :	MSDS_Antibody.pdf
Other_name :	melanoma associated antigen (mutated) 1
Molecular Weight :	78KD

Product Images



Western Blot analysis of mouse-kidney mouse-heart mouse-brain cells using MUM1 Polyclonal Antibody diluted at 1:1000. Secondary antibody was diluted at 1:20000

1,mouse-kidney 2,mouse-heart 3,mouse-brain