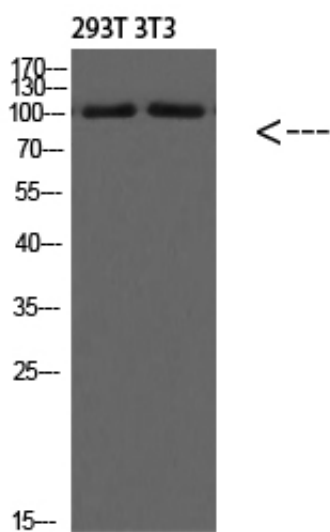




PI 3 Kinase Class 3 Polyclonal Antibody

Catalog_no :	AT5759
Applications :	WB,ELISA
Reactivity :	Human,Mouse,Rat,Predicted:Cow:PIG
Category :	抗原抗体
Size :	100µg/50µg/20µg
Gene_name :	PIK3C3 VPS34
Protein_name :	PI 3 Kinase Class 3
Humangene_id :	5289
Humanswissprot_no :	Q8NEB9
Immunogen :	Synthetic Peptide of PI 3 Kinase Class 3
Specificity :	PI 3 Kinase Class 3 Polyclonal Antibody detects endogenous levels of PI 3 Kinase Class 3
Formulation :	Liquid in PBS containing 50% glycerol, 0.5% BSA and 0.02% sodium azide.
Source :	Rabbit
Dilution :	WB 1:500-2000, ELISA 1:10000-20000
Purification :	The antibody was affinity-purified from rabbit antiserum by affinity-chromatography using epitope-specific immunogen.
Concentration :	1 mg/ml
Storage_stability :	-20°C/1 year
Msds :	MSDS_Antibody.pdf
Other_name :	phosphoinositide-3-kinase, class 3
Molecular Weight :	100KD

Product Images



Western Blot analysis of 293T 3T3 cells using PI 3 Kinase Class 3 Polyclonal Antibody diluted at 1:1500. Secondary antibody was diluted at 1:20000