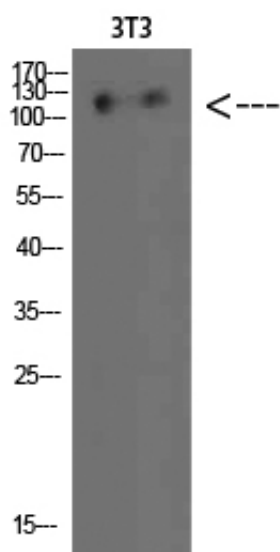


Hamartin Polyclonal Antibody

Catalog_no :	AT5760
Applications :	WB,ELISA
Reactivity :	Human
Category :	抗原抗体
Size :	100µg/50µg/20µg
Gene_name :	TSC1 KIAA0243 TSC
Protein_name :	Hamartin
Humangene_id :	7248
Humanswissprot_no :	Q92574
Immunogen :	Synthesized peptide derived from Hamartin . at AA range: 360-440
Specificity :	Hamartin Polyclonal Antibody detects endogenous levels of Hamartin
Formulation :	Liquid in PBS containing 50% glycerol, 0.5% BSA and 0.02% sodium azide.
Source :	Rabbit
Dilution :	WB 1:500-2000, ELISA 1:10000-20000
Purification :	The antibody was affinity-purified from rabbit antiserum by affinity-chromatography using epitope-specific immunogen.
Concentration :	1 mg/ml
Storage_stability :	-20°C/1 year
Msds :	MSDS_Antibody.pdf
Other_name :	tuberous sclerosis 1
Molecular Weight :	130KD

Product Images



Western Blot analysis of 3T3 cells using Hamartin Polyclonal Antibody diluted at 1:500. Secondary antibody was diluted at 1:20000