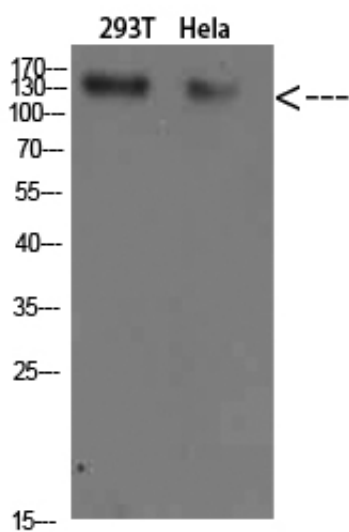




Collagen I Polyclonal Antibody

Catalog_no :	<u>AT5769</u>
Applications :	<u>WB,ELISA</u>
Reactivity :	<u>Human,Mouse,Rat</u>
Category :	<u>抗原抗体</u>
Size :	<u>100µg/50µg/20µg</u>
Protein_name :	<u>Collagen I</u>
Humangene_id	<u>1278</u>
:	
Humanswissprot	<u>P08123/P02452</u>
_no :	
Immunogen :	<u>Synthesized peptide derived from Collagen I . at AA range: 1200-1217</u>
Specificity :	<u>Collagen I Polyclonal Antibody detects endogenous levels of Collagen I</u>
Formulation :	<u>Liquid in PBS containing 50% glycerol, 0.5% BSA and 0.02% sodium azide.</u>
Source :	<u>Rabbit</u>
Dilution :	<u>WB 1:500-2000, ELISA 1:10000-20000</u>
Purification :	<u>The antibody was affinity-purified from rabbit antiserum by affinity-chromatography using epitope-specific immunogen.</u>
Concentration :	<u>1 mg/ml</u>
Storage_stability	<u>-20°C/1 year</u>
:	
Msds :	<u>MSDS_Antibody.pdf</u>
Other_name :	<u>collagen, type I, alpha 2</u>
Molecular	<u>135KD</u>
Weight :	

Product Images



Western Blot analysis of 293T HeLa cells using Collagen I Polyclonal Antibody diluted at 1:500. Secondary antibody was diluted at 1:20000