

Amyloid- $\beta$  Polyclonal Antibody

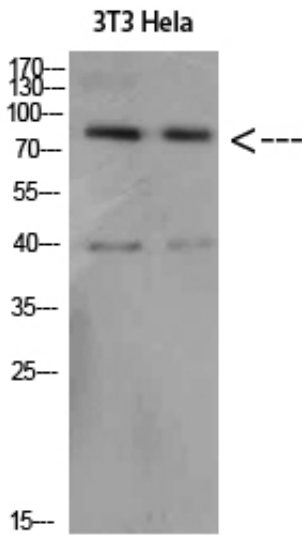
Catalog_no :	AT5773
Applications :	WB,ELISA
Reactivity :	Human
Category :	抗原抗体
Size :	100 $\mu$ g/50 $\mu$ g/20 $\mu$ g
Gene_name :	APP
Protein_name :	Amyloid- $\beta$
Humangene_id :	<a href="#">351</a>
Humanswissprot_no :	<a href="#">P05067</a>
Immunogen :	Synthesized peptide derived from Amyloid- $\beta$ at AA range: 631-680
Specificity :	Amyloid- $\beta$ Polyclonal Antibody detects endogenous levels of Amyloid- $\beta$
Formulation :	Liquid in PBS containing 50% glycerol, 0.5% BSA and 0.02% sodium azide.
Source :	Rabbit
Dilution :	WB 1:500-2000, ELISA 1:10000-20000
Purification :	The antibody was affinity-purified from rabbit antiserum by affinity-chromatography using epitope-specific immunogen.
Concentration :	1 mg/ml
Storage_stability :	-20°C/1 year
Msds :	MSDS_Antibody.pdf
Other_name :	Amyloid beta A4 protein (ABPP) (APPI) (APP) (Alzheimer disease amyloid protein) (Cerebral vascular amyloid peptide) (CVAP) (PreA4) (Protease nexin-II) (PN-II) [Cleaved into: N-APP; Soluble APP-alpha (S-APP-alpha); Soluble APP-beta (S-APP-beta); C99; Beta-amyloid protein 42 (Beta-APP42); Beta-amyloid protein 40 (Beta-APP40); C83; P3(42); P3(40); C80; Gamma-secretase C-terminal fragment 59 (Amyloid intracellular domain 59) (AICD-59) (AID(59)) (Gamma-CTF(59)); Gamma-secretase C-terminal fragment 57 (Amyloid intracellular domain 57) (AICD-57) (AID(57)) (Gamma-CTF(57)); Gamma-secretase C-terminal fragment 50 (Amyloid intracellular domain 50) (AICD-50) (AID(50)) (Gamma-CTF(50)); C31]
Molecular	86+45KD



Weight :

---

## Product Images



Western Blot analysis of 3T3 Hela cells using Amyloid- $\beta$  Polyclonal Antibody diluted at 1:500. Secondary antibody was diluted at 1:20000