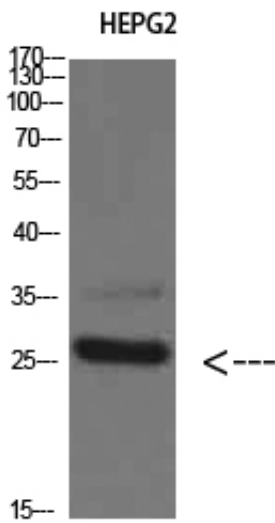




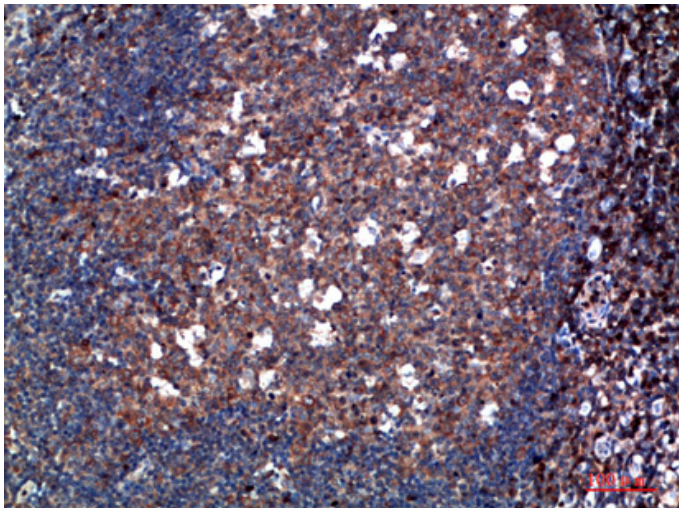
Tryptase-3 Polyclonal Antibody

Catalog_no :	<u>AT5776</u>
Applications :	<u>WB,ELISA</u>
Reactivity :	<u>Human</u>
Category :	<u>抗原抗体</u>
Size :	<u>100µg/50µg/20µg</u>
Gene_name :	<u>TPSD1</u>
Protein_name :	<u>Tryptase-3</u>
Humangene_id :	<u>23430</u>
Humanswissprot_no :	<u>Q9BZJ3</u>
Immunogen :	<u>Synthesized peptide derived from Tryptase-3 at AA range: 51-100</u>
Specificity :	<u>Tryptase-3 Polyclonal Antibody detects endogenous levels of Tryptase-3</u>
Formulation :	<u>Liquid in PBS containing 50% glycerol, 0.5% BSA and 0.02% sodium azide.</u>
Source :	<u>Rabbit</u>
Dilution :	<u>WB 1:500-2000, ELISA 1:10000-20000</u>
Purification :	<u>The antibody was affinity-purified from rabbit antiserum by affinity-chromatography using epitope-specific immunogen.</u>
Concentration :	<u>1 mg/ml</u>
Storage_stability :	<u>-20°C/1 year</u>
Msds :	<u>MSDS_Antibody.pdf</u>
Other_name :	<u>Tryptase delta (EC 3.4.21.59) (Delta-tryptase) (HmMCP-3-like tryptase III) (Mast cell mMCP-7-like) (Tryptase-3)</u>
Molecular Weight :	<u>26KD</u>

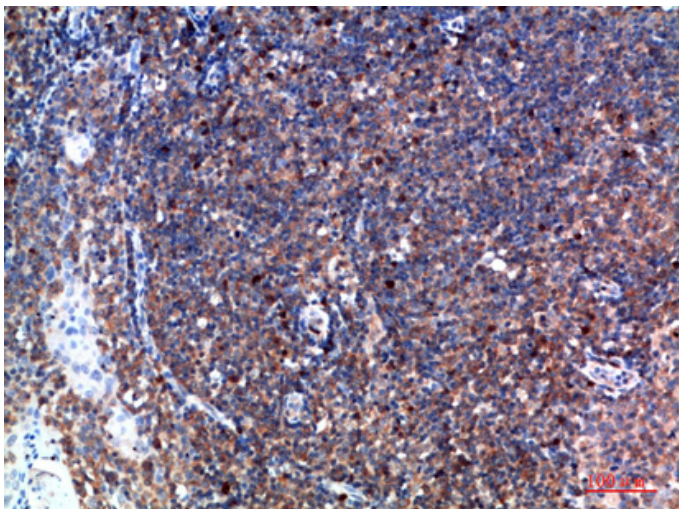
Product Images



Western Blot analysis of HEPG2 cells using Tryptase-3 Polyclonal Antibody diluted at 1:800. Secondary antibody was diluted at 1:20000

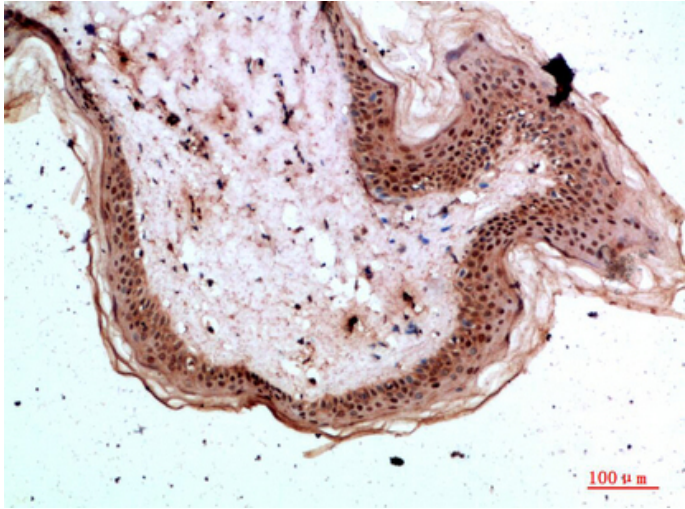


Immunohistochemical analysis of paraffin-embedded human-tonsil, antibody was diluted at 1:200

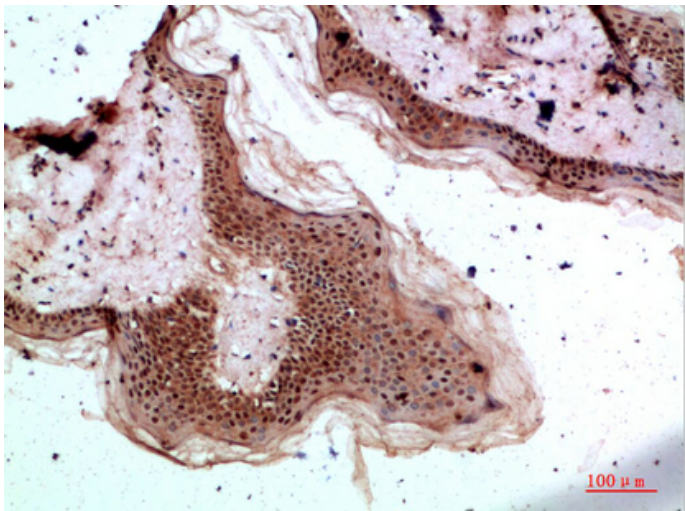


Immunohistochemical analysis of paraffin-embedded human-tonsil, antibody was diluted at 1:200

Immunohistochemical analysis of paraffin-embedded



human-skin, antibody was diluted at 1:200



Immunohistochemical analysis of paraffin-embedded human-skin, antibody was diluted at 1:200