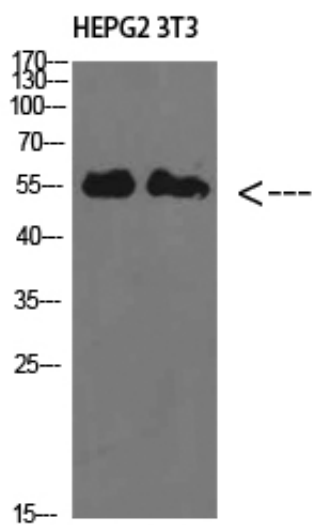


## IL-17RB Polyclonal Antibody

|                     |  |
|---------------------|--|
| Catalog_no :        | AT5781   |
| Applications :      | WB,ELISA   |
| Reactivity :        | Human  |
| Category :          | 抗原抗体   |
| Size :              | 100µg/50µg/20µg  |
| Gene_name :         | IL17RB   |
| Protein_name :      | IL-17RB  |
| Humangene_id :      | <a href="#">55540</a>  |
| Humanswissprot_no : | <a href="#">Q9NRM6</a>   |
| Immunogen :         | Synthesized peptide derived from IL-17RB at AA range: 251-300  |
| Specificity :       | IL-17RB Polyclonal Antibody detects endogenous levels of IL-17RB   |
| Formulation :       | Liquid in PBS containing 50% glycerol, 0.5% BSA and 0.02% sodium azide.  |
| Source :            | Rabbit   |
| Dilution :          | WB 1:500-2000, ELISA 1:10000-20000   |
| Purification :      | The antibody was affinity-purified from rabbit antiserum by affinity-chromatography using epitope-specific immunogen.  |
| Concentration :     | 1 mg/ml  |
| Storage_stability : | -20°C/1 year   |
| Msds :              | MSDS_Antibody.pdf  |
| Other_name :        | Interleukin-17 receptor B (IL-17 receptor B) (IL-17RB) (Cytokine receptor-like 4) (IL-17 receptor homolog 1) (IL-17Rh1) (IL17Rh1) (Interleukin-17B receptor) (IL-17B receptor) |
| Molecular Weight :  | 55KD   |

## Product Images



Western Blot analysis of HEPG2 3T3 cells using IL-17RB Polyclonal Antibody diluted at 1:1000. Secondary antibody was diluted at 1:20000