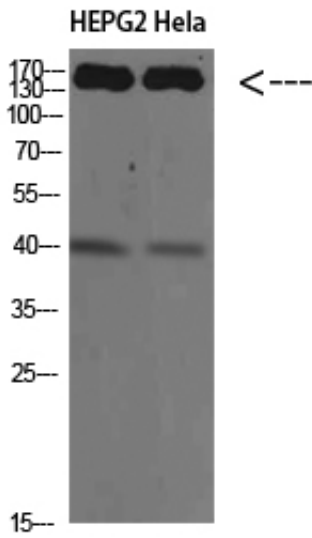




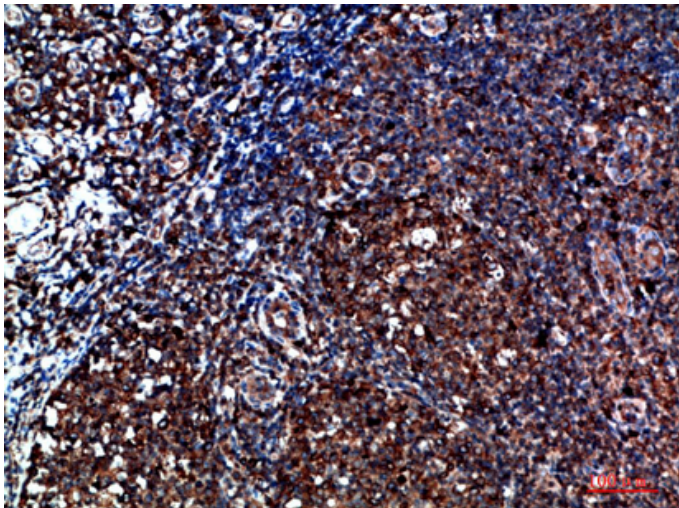
## CYFIP2 Polyclonal Antibody

Catalog_no :	AT5782
Applications :	WB,ELISA
Reactivity :	Human,Mouse,Rat
Category :	抗原抗体
Size :	100µg/50µg/20µg
Gene_name :	CYFIP2
Protein_name :	CYFIP2
Humangene_id :	<a href="#">26999</a>
Humanswissprot_no :	<a href="#">Q96F07</a>
Immunogen :	Synthesized peptide derived from CYFIP2 at AA range: 1171-1220
Specificity :	CYFIP2 Polyclonal Antibody detects endogenous levels of CYFIP2
Formulation :	Liquid in PBS containing 50% glycerol, 0.5% BSA and 0.02% sodium azide.
Source :	Rabbit
Dilution :	WB 1:500-2000, ELISA 1:10000-20000
Purification :	The antibody was affinity-purified from rabbit antiserum by affinity-chromatography using epitope-specific immunogen.
Concentration :	1 mg/ml
Storage_stability :	-20°C/1 year
Msds :	<a href="#">MSDS_Antibody.pdf</a>
Other_name :	Cytoplasmic FMR1-interacting protein 2 (p53-inducible protein 121)
Molecular Weight :	150+45KD

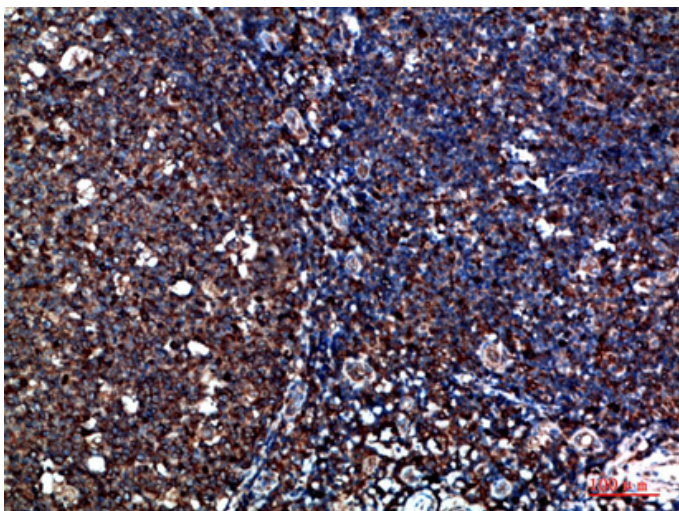
## Product Images



Western Blot analysis of HEPG2 Hela cells using CYFIP2 Polyclonal Antibody diluted at 1:500. Secondary antibody was diluted at 1:20000

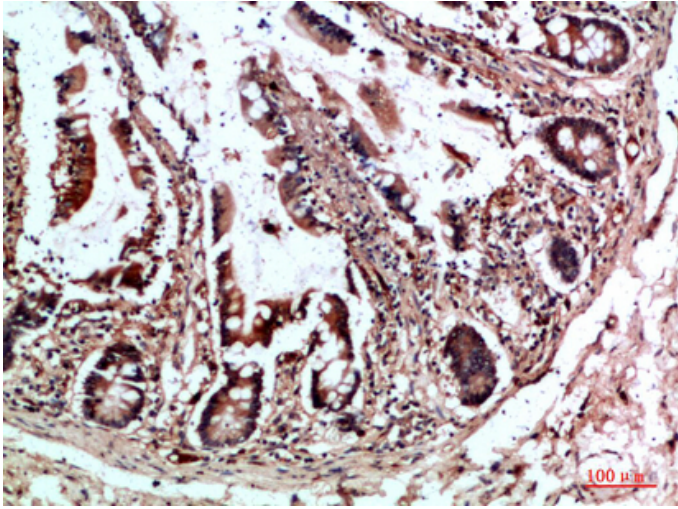


Immunohistochemical analysis of paraffin-embedded human-tonsil, antibody was diluted at 1:200

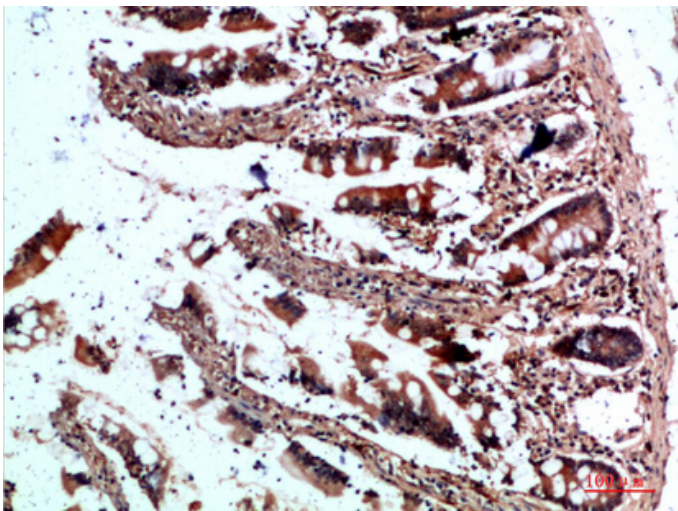


Immunohistochemical analysis of paraffin-embedded human-tonsil, antibody was diluted at 1:200

Immunohistochemical analysis of paraffin-embedded



human-colon, antibody was diluted at 1:200



Immunohistochemical analysis of paraffin-embedded human-colon, antibody was diluted at 1:200