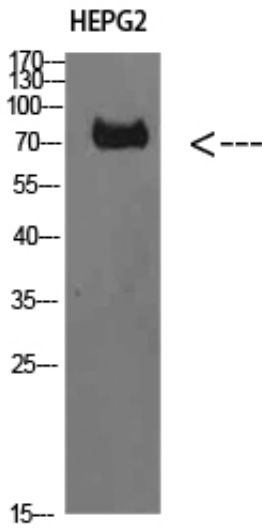


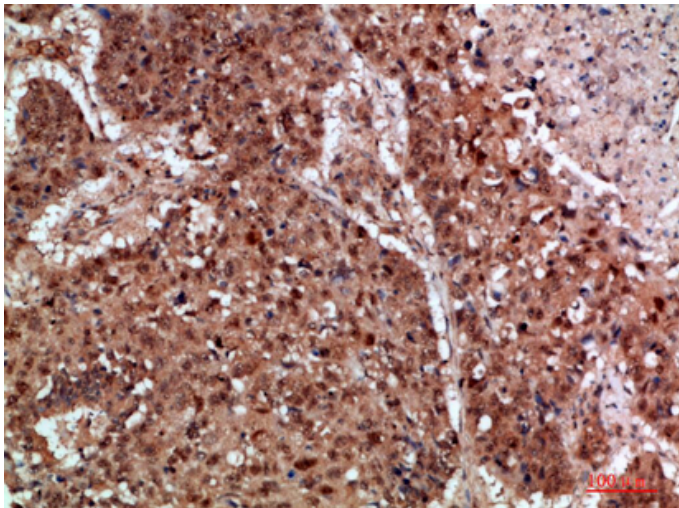
TRIF Polyclonal Antibody

Catalog_no :	AT5783
Applications :	WB,ELISA
Reactivity :	Human
Category :	抗原抗体
Size :	100µg/50µg/20µg
Gene_name :	TICAM1
Protein_name :	TRIF
Humangene_id :	148022
Humanswissprot_no :	Q8IUC6
Immunogen :	Synthesized peptide derived from TRIF at AA range: 663-712
Specificity :	TRIF Polyclonal Antibody detects endogenous levels of TRIF
Formulation :	Liquid in PBS containing 50% glycerol, 0.5% BSA and 0.02% sodium azide.
Source :	Rabbit
Dilution :	WB 1:500-2000, ELISA 1:10000-20000
Purification :	The antibody was affinity-purified from rabbit antiserum by affinity-chromatography using epitope-specific immunogen.
Concentration :	1 mg/ml
Storage_stability :	-20°C/1 year
Msds :	MSDS_Antibody.pdf
Other_name :	TIR domain-containing adapter molecule 1 (TICAM-1) (Proline-rich, vinculin and TIR domain-containing protein B) (Putative NF-kappa-B-activating protein 502H) (Toll-interleukin-1 receptor domain-containing adapter protein inducing interferon beta) (TIR domain-containing adapter protein inducing IFN-beta)
Molecular Weight :	80KD

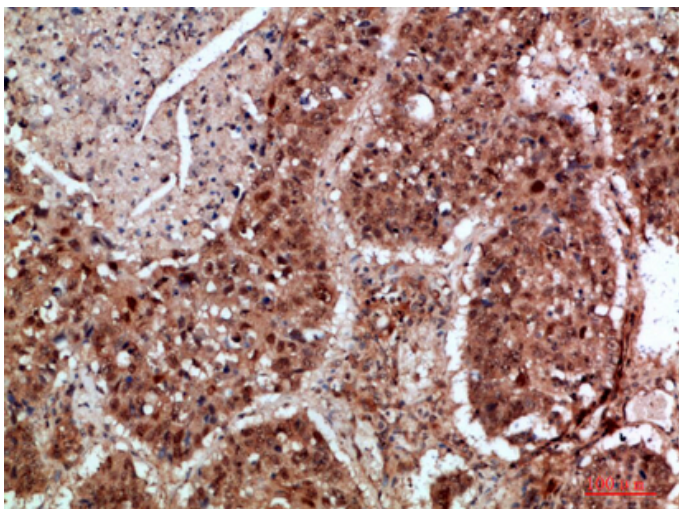
Product Images



Western Blot analysis of HEPG2 cells using TRIF Polyclonal Antibody diluted at 1:1000. Secondary antibody was diluted at 1:20000

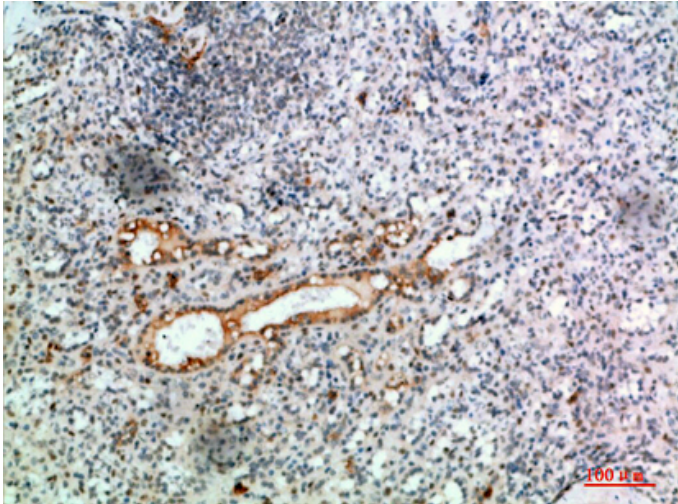


Immunohistochemical analysis of paraffin-embedded human-lung-cancer, antibody was diluted at 1:200

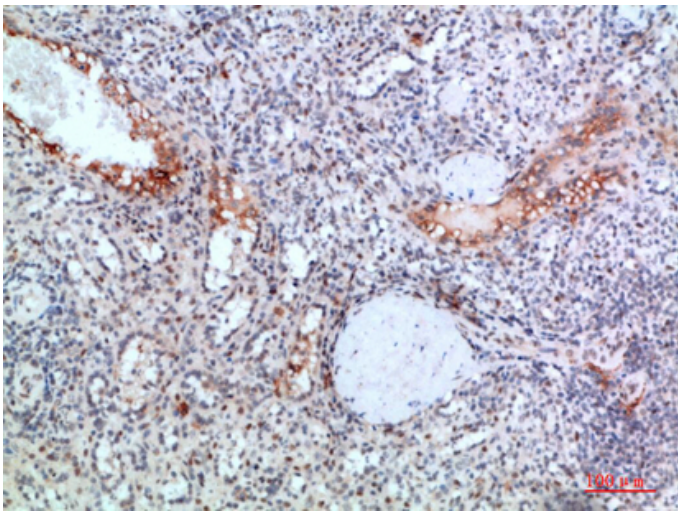


Immunohistochemical analysis of paraffin-embedded human-lung-cancer, antibody was diluted at 1:200

Immunohistochemical analysis of paraffin-embedded



human-spleen, antibody was diluted at 1:200



Immunohistochemical analysis of paraffin-embedded human-spleen, antibody was diluted at 1:200