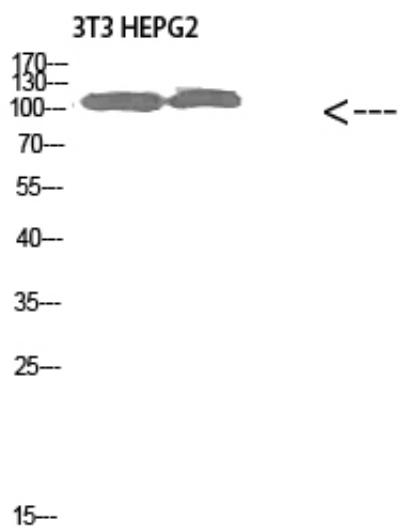




Collagen alpha-1(XXVIII)Polyclonal Antibody

Catalog_no :	AT5784
Applications :	WB,ELISA
Reactivity :	Human,Mouse
Category :	抗原抗体
Size :	100µg/50µg/20µg
Gene_name :	COL28A1
Protein_name :	Collagen alpha-1(XXVIII)Polyclonal Antibody
Humangene_id :	340267
Humanswissprot_no :	Q2UY09
Immunogen :	The antiserum was produced against synthesized peptide derived from the N-terminal region of human COL28A1. AA range:111-160
Specificity :	Collagen alpha-1(XXVIII)Polyclonal Antibody detects endogenous levels of Collagen alpha-1(XXVIII)Polyclonal Antibody
Formulation :	Liquid in PBS containing 50% glycerol, 0.5% BSA and 0.02% sodium azide.
Source :	Rabbit
Dilution :	WB 1:500-2000, ELISA 1:10000-20000
Purification :	The antibody was affinity-purified from rabbit antiserum by affinity-chromatography using epitope-specific immunogen.
Concentration :	1 mg/ml
Storage_stability :	-20°C/1 year
Msds :	MSDS_Antibody.pdf
Other_name :	Collagen alpha-1(XXVIII) chain
Molecular Weight :	116KD

Product Images



Western Blot analysis of 3T3 HEPG2 cells using Collagen alpha-1(XXVIII) Polyclonal Antibody diluted at 1:1000. Secondary antibody was diluted at 1:20000