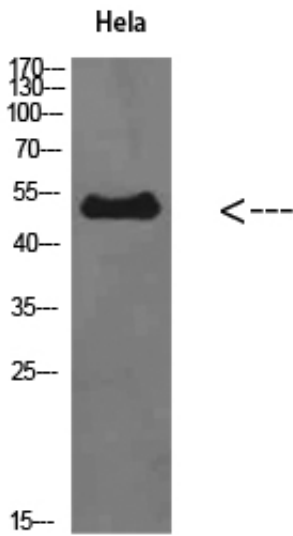




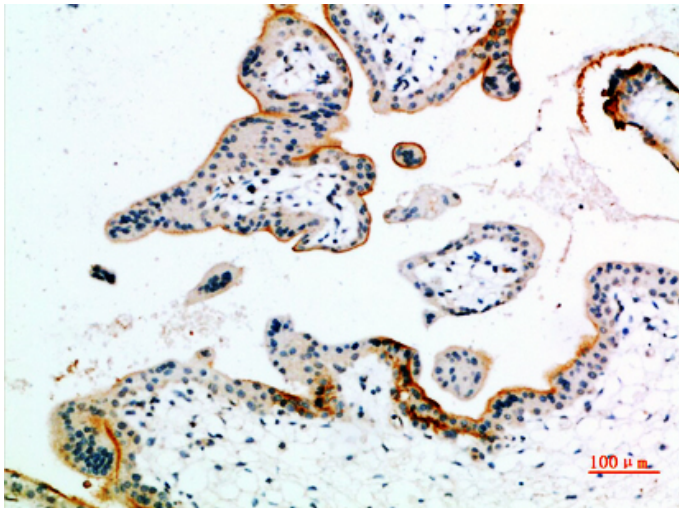
ETBR Polyclonal Antibody

Catalog_no :	<u>AT5786</u>
Applications :	<u>WB,IHC-p,ELISA</u>
Reactivity :	<u>Human</u>
Category :	<u>抗原抗体</u>
Size :	<u>100µg/50µg/20µg</u>
Gene_name :	<u>EDNRB</u>
Protein_name :	<u>ETBR</u>
Humangene_id	<u>1910</u>
:	<u></u>
Humanswissprot	<u>P24530</u>
_no :	<u></u>
Immunogen :	<u>Synthesized peptide derived from ETBR at AA range: 31-80</u>
Specificity :	<u>ETBR Polyclonal Antibody detects endogenous levels of ETBR</u>
Formulation :	<u>Liquid in PBS containing 50% glycerol, 0.5% BSA and 0.02% sodium azide.</u>
Source :	<u>Rabbit</u>
Dilution :	<u>IHC-p: 100-300.WB 1:500-2000, ELISA 1:10000-20000</u>
Purification :	<u>The antibody was affinity-purified from rabbit antiserum by affinity-chromatography using epitope-specific immunogen.</u>
Concentration :	<u>1 mg/ml</u>
Storage_stability	<u>-20°C/1 year</u>
:	<u></u>
Msds :	<u>MSDS_Antibody.pdf</u>
Other_name :	<u>Endothelin B receptor (ET-B) (ET-BR) (Endothelin receptor non-selective type)</u>
Molecular	<u>50KD</u>
Weight :	<u></u>

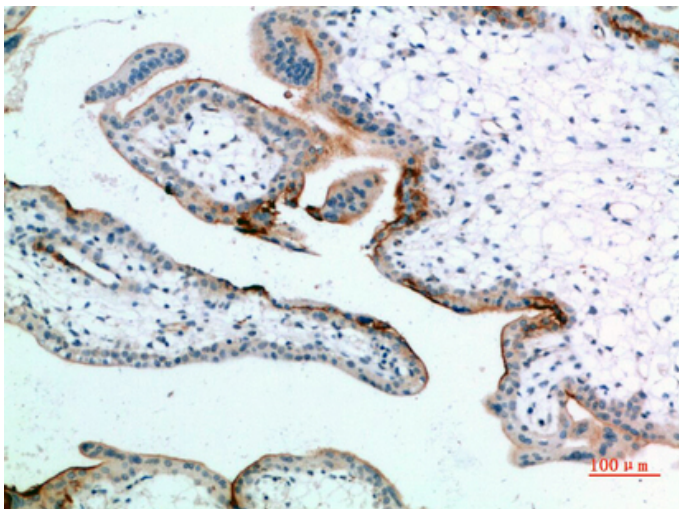
Product Images



Western Blot analysis of Hela cells using ETBR Polyclonal Antibody diluted at 1:500. Secondary antibody was diluted at 1:20000

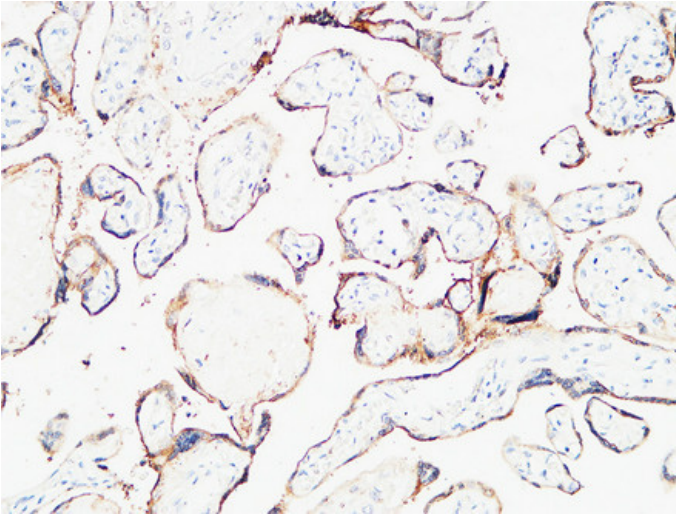


Immunohistochemical analysis of paraffin-embedded human-placenta, antibody was diluted at 1:200

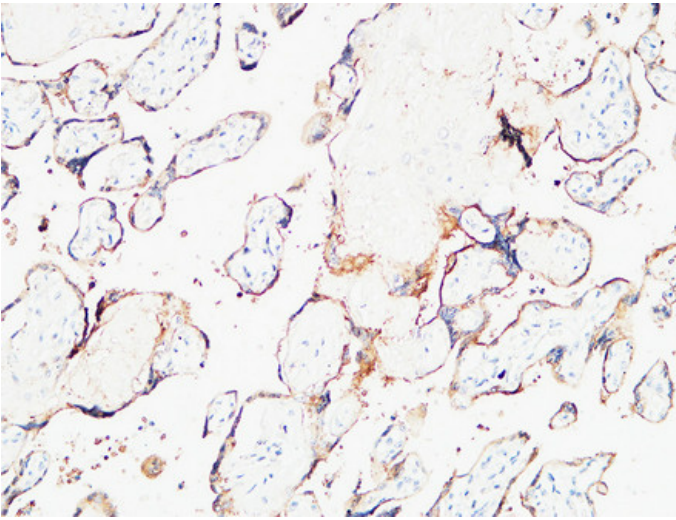


Immunohistochemical analysis of paraffin-embedded human-placenta, antibody was diluted at 1:200

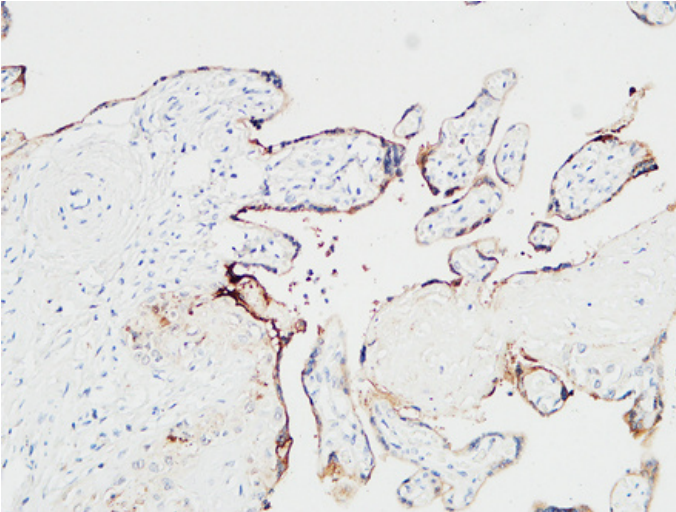
Immunohistochemical analysis of paraffin-embedded



Human placenta. 1, Antibody was diluted at 1:200(4°,overnight). 2, High-pressure and temperature EDTA, pH8.0 was used for antigen retrieval. 3,Secondary antibody was diluted at 1:200(room temperature, 30min).



Immunohistochemical analysis of paraffin-embedded Human placenta. 1, Antibody was diluted at 1:200(4°,overnight). 2, High-pressure and temperature EDTA, pH8.0 was used for antigen retrieval. 3,Secondary antibody was diluted at 1:200(room temperature, 30min).



Immunohistochemical analysis of paraffin-embedded Human placenta. 1, Antibody was diluted at 1:200(4°,overnight). 2, High-pressure and temperature EDTA, pH8.0 was used for antigen retrieval. 3,Secondary antibody was diluted at 1:200(room temperature, 30min).