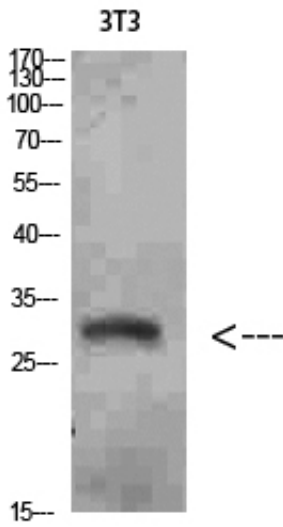




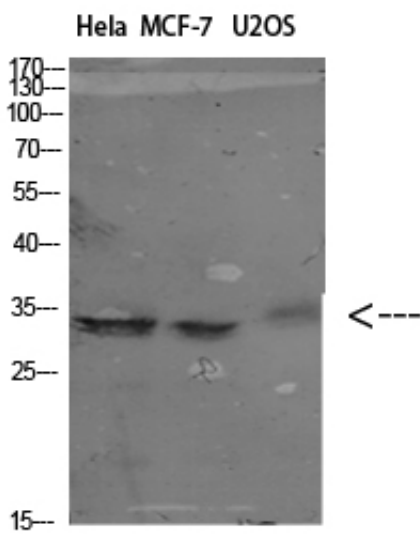
Nanos Homologue 1 (NANOS1) Polyclonal Antibody

Catalog_no :	AT5788
Applications :	WB,ELISA
Reactivity :	Human
Category :	抗原抗体
Size :	100µg/50µg/20µg
Gene_name :	NANOS1
Protein_name :	Nanos Homologue 1 (NANOS1)
Humangene_id :	340719
Humanswissprot_no :	Q8WY41
Immunogen :	Synthesized peptide derived from Nanos Homologue 1 (NANOS1) at AA range: 151-200
Specificity :	Nanos Homologue 1 (NANOS1) Polyclonal Antibody detects endogenous levels of Nanos Homologue 1 (NANOS1)
Formulation :	Liquid in PBS containing 50% glycerol, 0.5% BSA and 0.02% sodium azide.
Source :	Rabbit
Dilution :	WB 1:500-2000, ELISA 1:10000-20000
Purification :	The antibody was affinity-purified from rabbit antiserum by affinity-chromatography using epitope-specific immunogen.
Concentration :	1 mg/ml
Storage_stability :	-20°C/1 year
Msds :	MSDS_Antibody.pdf
Other_name :	Nanos homolog 1 (NOS-1) (EC_Rep1a)
Molecular Weight :	30KD

Product Images

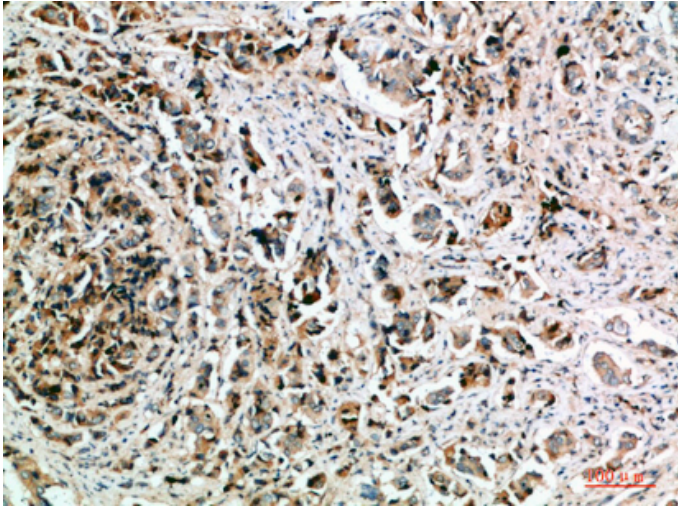


Western Blot analysis of 3T3 cells using Nanos Homologue 1 (NANOS1) Polyclonal Antibody diluted at 1:1500. Secondary antibody was diluted at 1:20000

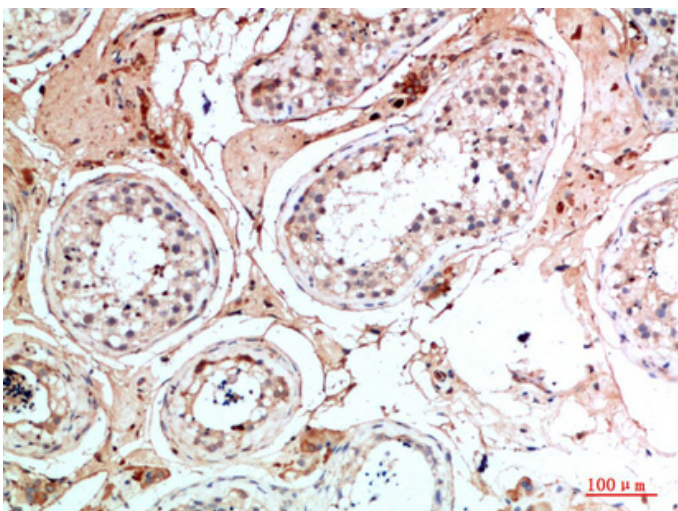
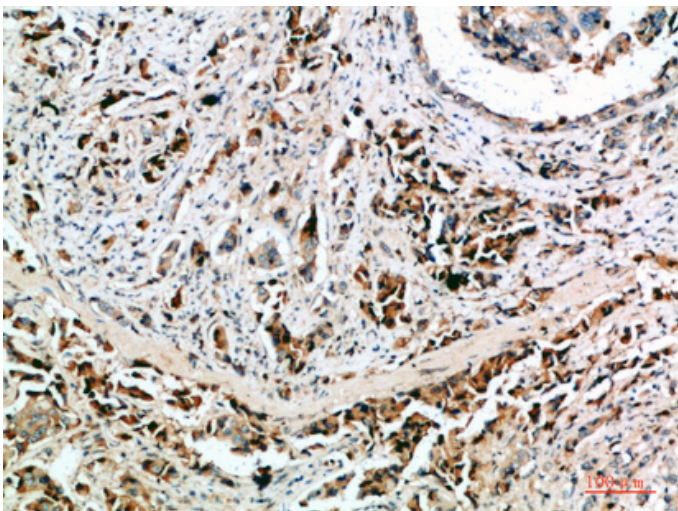


Western Blot analysis of various cells using Antibody diluted at 1:1000. Secondary antibody was diluted at 1:20000

Immunohistochemical analysis of paraffin-embedded human-breast-cancer, antibody was diluted at 1:200



Immunohistochemical analysis of paraffin-embedded human-breast-cancer, antibody was diluted at 1:200



Immunohistochemical analysis of paraffin-embedded human-testis, antibody was diluted at 1:200

Immunohistochemical analysis of paraffin-embedded human-testis, antibody was diluted at 1:200

