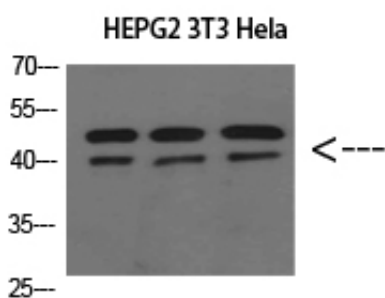




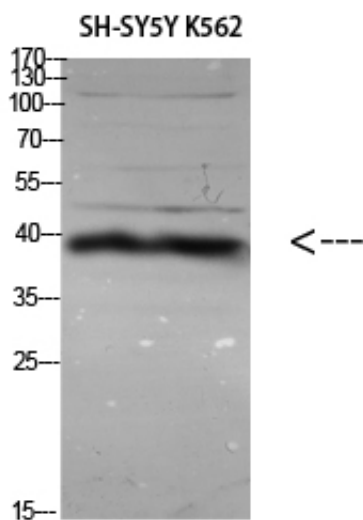
ERLIN1/2 Polyclonal Antibody

Catalog_no :	AT5789
Applications :	WB,ELISA
Reactivity :	Human,Mouse,Rat
Category :	抗原抗体
Size :	100µg/50µg/20µg
Gene_name :	ERLIN1/ERLIN2
Protein_name :	ERLIN1/2
Humanswissprot _no :	O75477/O94905
Immunogen :	Synthesized peptide derived from ERLIN1/2 at AA range: 31-80
Specificity :	ERLIN1/2 Polyclonal Antibody detects endogenous levels of ERLIN1/2
Formulation :	Liquid in PBS containing 50% glycerol, 0.5% BSA and 0.02% sodium azide.
Source :	Rabbit
Dilution :	WB 1:500-2000, ELISA 1:10000-20000
Purification :	The antibody was affinity-purified from rabbit antiserum by affinity-chromatography using epitope-specific immunogen.
Concentration :	1 mg/ml
Storage_stability :	-20°C/1 year
Msds :	MSDS_Antibody.pdf
Molecular Weight :	40+42KD

Product Images

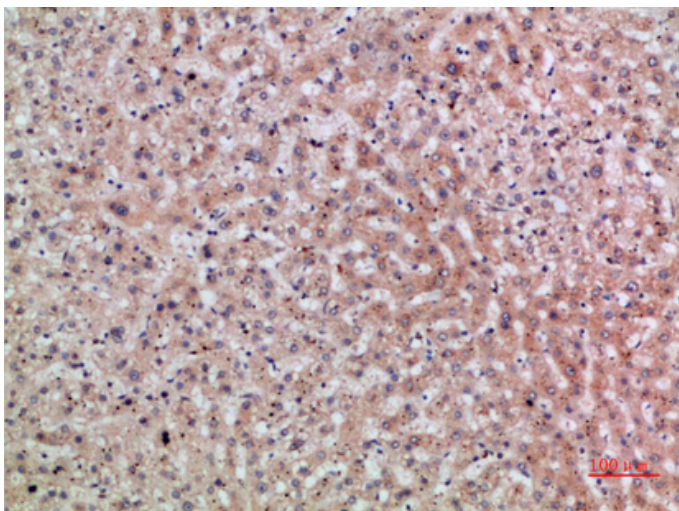
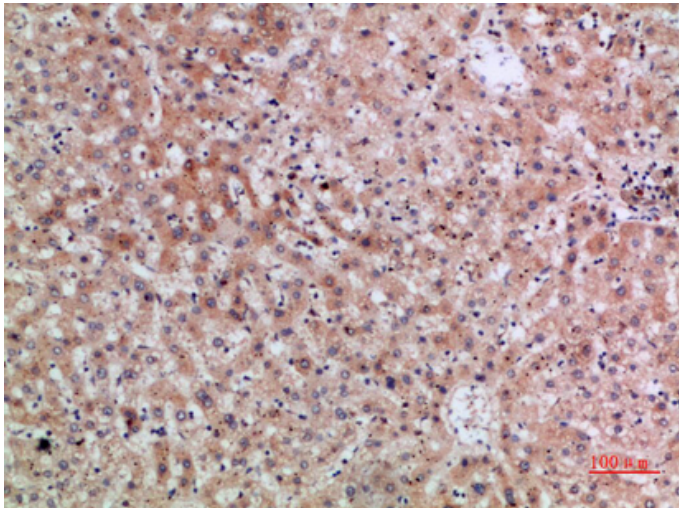


Western Blot analysis of HEPG2 3T3 Hela cells using ERLIN1/2 Polyclonal Antibody diluted at 1:800. Secondary antibody was diluted at 1:20000



Western Blot analysis of various cells using Antibody diluted at 1:1000. Secondary antibody was diluted at 1:20000

Immunohistochemical analysis of paraffin-embedded human-liver, antibody was diluted at 1:200



Immunohistochemical analysis of paraffin-embedded human-liver, antibody was diluted at 1:200