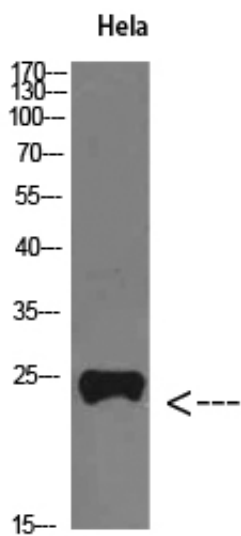


## PTH-rP Polyclonal Antibody

Catalog_no :	<u>AT5790</u>
Applications :	<u>WB,ELISA</u>
Reactivity :	<u>Human</u>
Category :	<u>抗原抗体</u>
Size :	<u>100µg/50µg/20µg</u>
Gene_name :	<u>PTHLH</u>
Protein_name :	<u>PTH-rP</u>
Humangene_id :	<u><a href="#">5744</a></u>
Humanswissprot_no :	<u><a href="#">P12272</a></u>
Immunogen :	<u>The antiserum was produced against synthesized peptide derived from the Internal region of human PTHLH. AA range:101-150</u>
Specificity :	<u>PTH-rP Polyclonal Antibody detects endogenous levels of PTH-rP</u>
Formulation :	<u>Liquid in PBS containing 50% glycerol, 0.5% BSA and 0.02% sodium azide.</u>
Source :	<u>Rabbit</u>
Dilution :	<u>WB 1:500-2000, ELISA 1:10000-20000</u>
Purification :	<u>The antibody was affinity-purified from rabbit antiserum by affinity-chromatography using epitope-specific immunogen.</u>
Concentration :	<u>1 mg/ml</u>
Storage_stability :	<u>-20°C/1 year</u>
Msds :	<u>MSDS_Antibody.pdf</u>
Other_name :	<u>Parathyroid hormone-related protein (PTH-rP) (PTHrP) (Parathyroid hormone-like protein) (PLP) [Cleaved into: PTHrP[1-36]; PTHrP[38-94]; Osteostatin (PTHrP[107-139])]</u>
Molecular Weight :	<u>25KD</u>

## Product Images



Western Blot analysis of Hela cells using PTH-rP Polyclonal Antibody diluted at 1:800. Secondary antibody was diluted at 1:20000