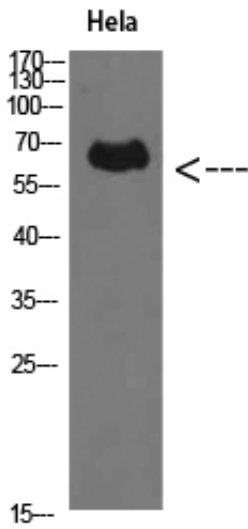


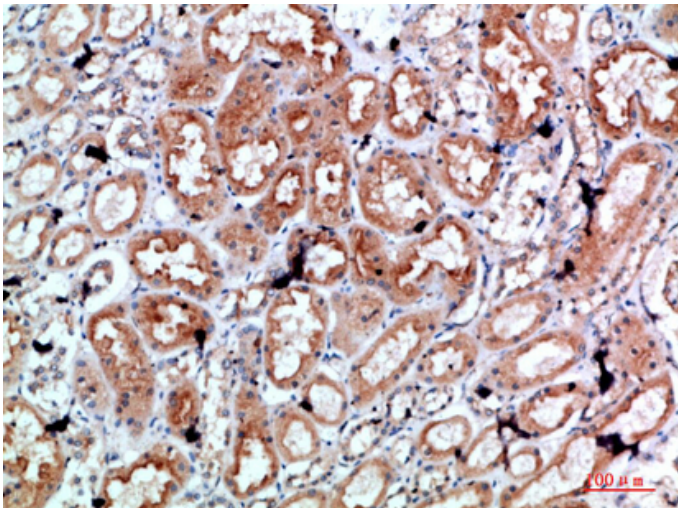
Perforin 1 Polyclonal Antibody

Catalog_no :	AT5792
Applications :	WB,IHC,ELISA
Reactivity :	Human
Category :	抗原抗体
Size :	100µg/50µg/20µg
Gene_name :	PRF1
Protein_name :	Perforin 1
Humangene_id :	5551
Humanswissprot_no :	P14222
Immunogen :	The antiserum was produced against synthesized peptide derived from the C-terminal region of human PRF1. AA range:451-500
Specificity :	Perforin 1 Polyclonal Antibody detects endogenous levels of Perforin 1
Formulation :	Liquid in PBS containing 50% glycerol, 0.5% BSA and 0.02% sodium azide.
Source :	Rabbit
Dilution :	WB 1:500-2000, IHC 1:50-200, ELISA 1:10000-20000
Purification :	The antibody was affinity-purified from rabbit antiserum by affinity-chromatography using epitope-specific immunogen.
Concentration :	1 mg/ml
Storage_stability :	-20°C/1 year
Msds :	MSDS_Antibody.pdf
Other_name :	Perforin-1 (P1) (Cytolysin) (Lymphocyte pore-forming protein) (PFP)
Molecular Weight :	61KD

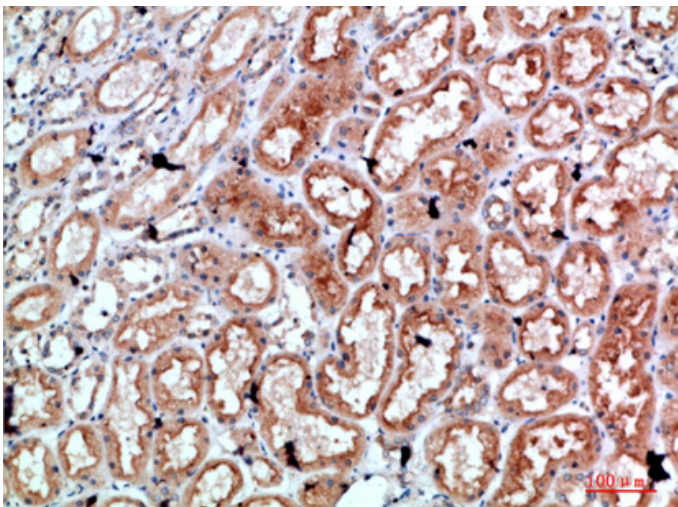
Product Images



Western Blot analysis of HeLa cells using Perforin 1 Polyclonal Antibody diluted at 1:500. Secondary antibody was diluted at 1:20000

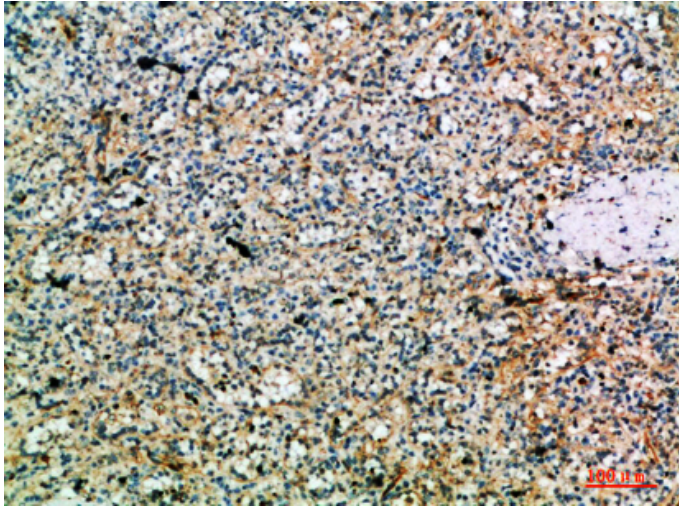


Immunohistochemical analysis of paraffin-embedded human-kidney, antibody was diluted at 1:200

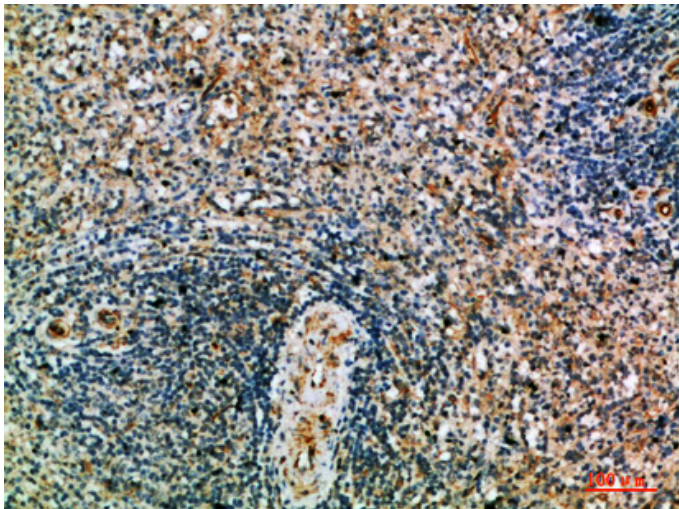


Immunohistochemical analysis of paraffin-embedded human-kidney, antibody was diluted at 1:200

Immunohistochemical analysis of paraffin-embedded



human-spleen, antibody was diluted at 1:200



Immunohistochemical analysis of paraffin-embedded human-spleen, antibody was diluted at 1:200