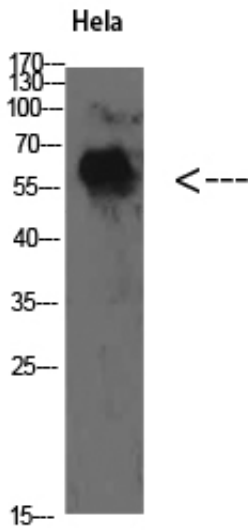




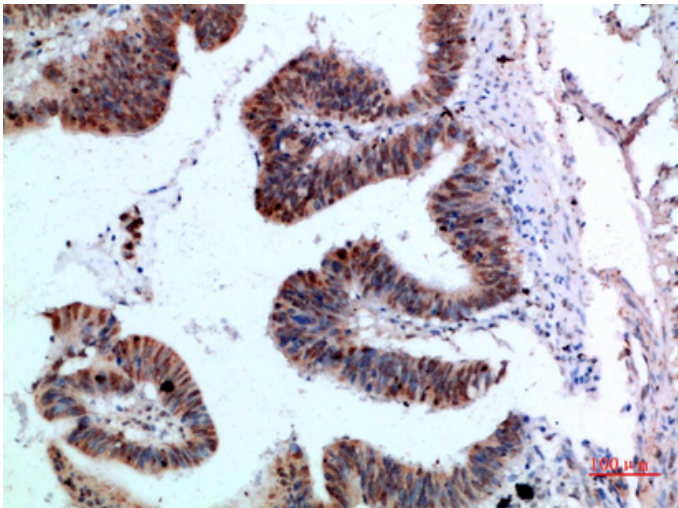
## TyrRS Polyclonal Antibody

Catalog_no :	<u>AT5798</u>
Applications :	<u>WB,ELISA</u>
Reactivity :	<u>Human,Mouse,Rat</u>
Category :	<u>抗原抗体</u>
Size :	<u>100µg/50µg/20µg</u>
Gene_name :	<u>YARS</u>
Protein_name :	<u>TyrRS</u>
Humangene_id :	<u><a href="#">8565</a></u>
Humanswissprot_no :	<u><a href="#">P54577</a></u>
Immunogen :	<u>The antiserum was produced against synthesized peptide derived from the C-terminal region of human YARS. AA range:451-500</u>
Specificity :	<u>TyrRS Polyclonal Antibody detects endogenous levels of TyrRS</u>
Formulation :	<u>Liquid in PBS containing 50% glycerol, 0.5% BSA and 0.02% sodium azide.</u>
Source :	<u>Rabbit</u>
Dilution :	<u>WB 1:500-2000, ELISA 1:10000-20000</u>
Purification :	<u>The antibody was affinity-purified from rabbit antiserum by affinity-chromatography using epitope-specific immunogen.</u>
Concentration :	<u>1 mg/ml</u>
Storage_stability :	<u>-20°C/1 year</u>
Msds :	<u>MSDS_Antibody.pdf</u>
Other_name :	<u>Tyrosine--tRNA ligase, cytoplasmic (EC 6.1.1.1) (Tyrosyl-tRNA synthetase) (TyrRS)</u>
Molecular Weight :	<u>60KD</u>

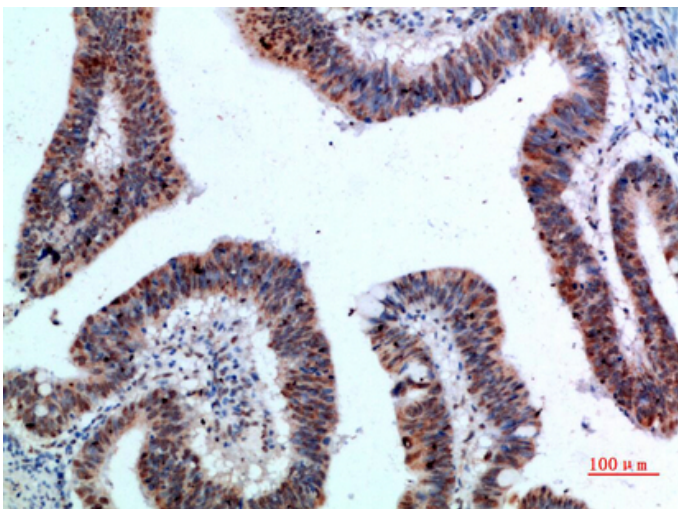
## Product Images



Western Blot analysis of Hela cells using TyrRS Polyclonal Antibody diluted at 1:500. Secondary antibody was diluted at 1:20000

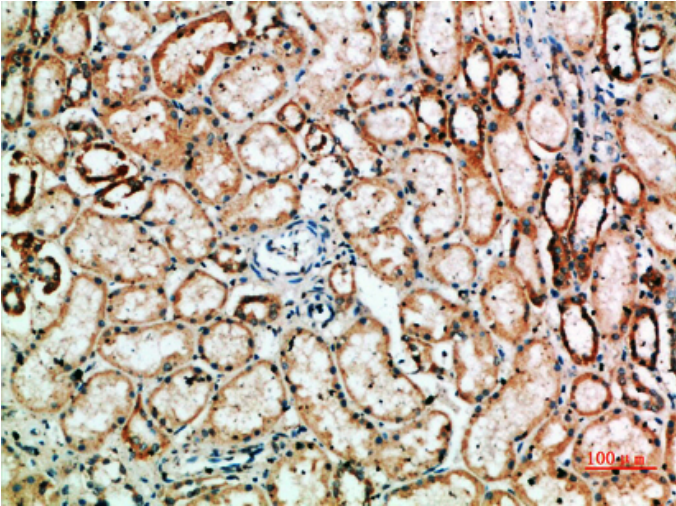


Immunohistochemical analysis of paraffin-embedded human-colon-cancer, antibody was diluted at 1:200

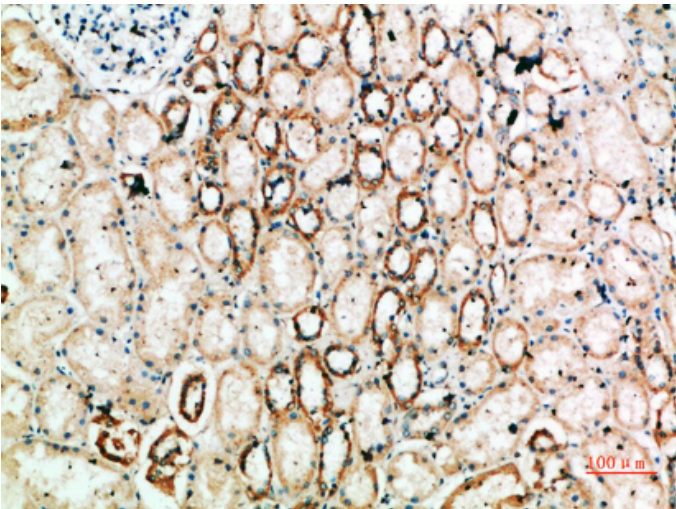


Immunohistochemical analysis of paraffin-embedded human-colon-cancer, antibody was diluted at 1:200

Immunohistochemical analysis of paraffin-embedded



human-kidney, antibody was diluted at 1:200



Immunohistochemical analysis of paraffin-embedded human-kidney, antibody was diluted at 1:200