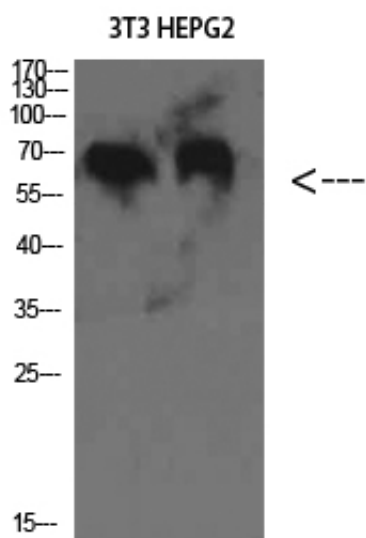




C8 β Polyclonal Antibody

Catalog_no :	<u>AT5800</u>
Applications :	<u>WB,ELISA</u>
Reactivity :	<u>Human,Rat</u>
Category :	<u>抗原抗体</u>
Size :	<u>100μg/50μg/20μg</u>
Gene_name :	<u>C8B</u>
Protein_name :	<u>C8 β</u>
Humangene_id :	<u>732</u>
Humanswissprot_no :	<u>P07358</u>
Immunogen :	<u>The antiserum was produced against synthesized peptide derived from the Internal region of human C8B. AA range:371-420</u>
Specificity :	<u>C8 β Polyclonal Antibody detects endogenous levels of C8 β</u>
Formulation :	<u>Liquid in PBS containing 50% glycerol, 0.5% BSA and 0.02% sodium azide.</u>
Source :	<u>Rabbit</u>
Dilution :	<u>WB 1:500-2000, ELISA 1:10000-20000</u>
Purification :	<u>The antibody was affinity-purified from rabbit antiserum by affinity-chromatography using epitope-specific immunogen.</u>
Concentration :	<u>1 mg/ml</u>
Storage_stability :	<u>-20°C/1 year</u>
Msds :	<u>MSDS_Antibody.pdf</u>
Other_name :	<u>Complement component C8 beta chain (Complement component 8 subunit beta)</u>
Molecular Weight :	<u>70KD</u>

Product Images



Western Blot analysis of 3T3 HEPG2 cells using C8 β Polyclonal Antibody diluted at 1:2000. Secondary antibody was diluted at 1:20000