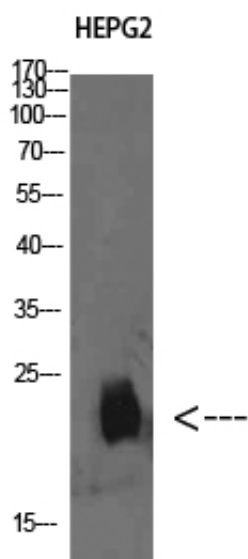




Plasminogen receptor Polyclonal Antibody

Catalog_no :	AT5801
Applications :	WB,ELISA
Reactivity :	Human,Rat
Category :	抗原抗体
Size :	100µg/50µg/20µg
Gene_name :	PLGRKT
Protein_name :	Plasminogen receptor
Humangene_id :	55848
Humanswissprot_no :	Q9HBL7
Immunogen :	The antiserum was produced against synthesized peptide derived from the Internal region of human PLGRKT. AA range:1-50
Specificity :	Plasminogen receptor Polyclonal Antibody detects endogenous levels of Plasminogen receptor
Formulation :	Liquid in PBS containing 50% glycerol, 0.5% BSA and 0.02% sodium azide.
Source :	Rabbit
Dilution :	WB 1:500-2000, ELISA 1:10000-20000
Purification :	The antibody was affinity-purified from rabbit antiserum by affinity-chromatography using epitope-specific immunogen.
Concentration :	1 mg/ml
Storage_stability :	-20°C/1 year
Msds :	MSDS_Antibody.pdf
Other_name :	Plasminogen receptor (KT) (Plg-R(KT))
Molecular Weight :	17KD

Product Images



Western Blot analysis of HEPG2 cells using Plasminogen receptor Polyclonal Antibody diluted at 1:500. Secondary antibody was diluted at 1:20000