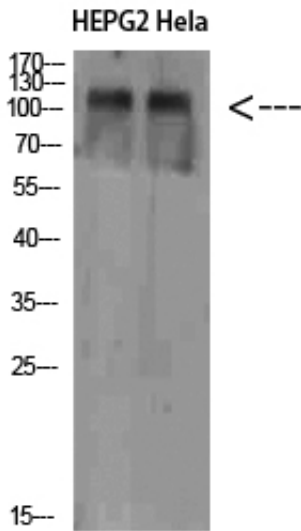


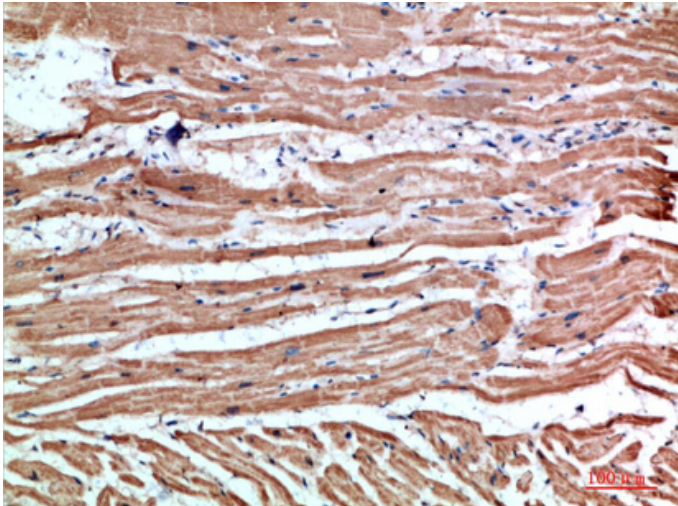
## NLRX1 Polyclonal Antibody

Catalog_no :	AT5802
Applications :	WB,IHC-p,ELISA
Reactivity :	Human,Mouse,Rat
Category :	抗原抗体
Size :	100µg/50µg/20µg
Gene_name :	NLRX1
Protein_name :	NLRX1
Humangene_id :	<a href="#">79671</a>
Humanswissprot_no :	<a href="#">Q86UT6</a>
Immunogen :	The antiserum was produced against synthesized peptide derived from the Internal region of human NLRX1. AA range:581-630
Specificity :	NLRX1 Polyclonal Antibody detects endogenous levels of NLRX1
Formulation :	Liquid in PBS containing 50% glycerol, 0.5% BSA and 0.02% sodium azide.
Source :	Rabbit
Dilution :	WB 1:500-2000, IHC-p 1:50-300, ELISA 1:10000-20000
Purification :	The antibody was affinity-purified from rabbit antiserum by affinity-chromatography using epitope-specific immunogen.
Concentration :	1 mg/ml
Storage_stability :	-20°C/1 year
Msds :	MSDS_Antibody.pdf
Other_name :	NLR family member X1 (Caterpillar protein 11.3) (CLR11.3) (Nucleotide-binding oligomerization domain protein 26) (Nucleotide-binding oligomerization domain protein 5) (Nucleotide-binding oligomerization domain protein 9)
Molecular Weight :	108KD

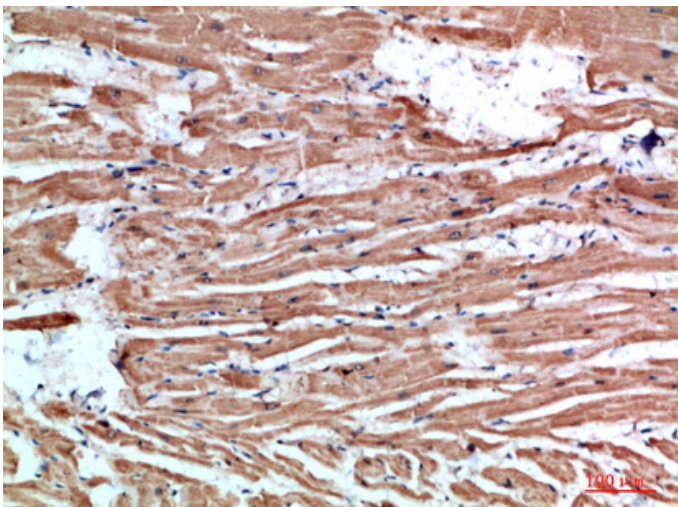
## Product Images



Western Blot analysis of HEPG2 Hela cells using NLRX1 Polyclonal Antibody diluted at 1:1000. Secondary antibody was diluted at 1:20000

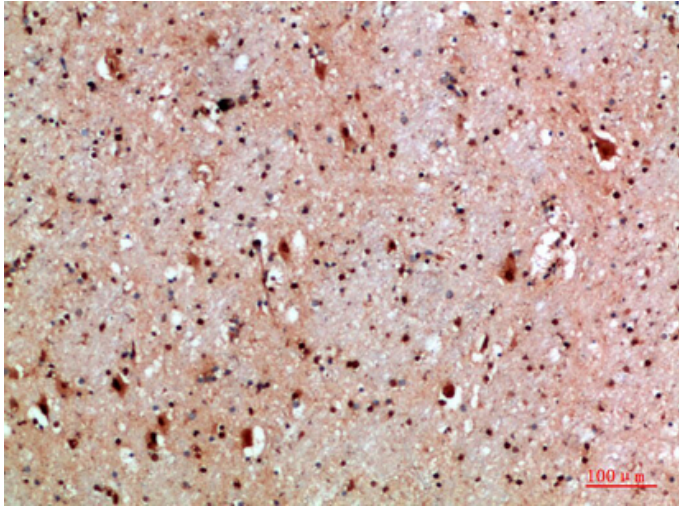


Immunohistochemical analysis of paraffin-embedded human-heart, antibody was diluted at 1:200

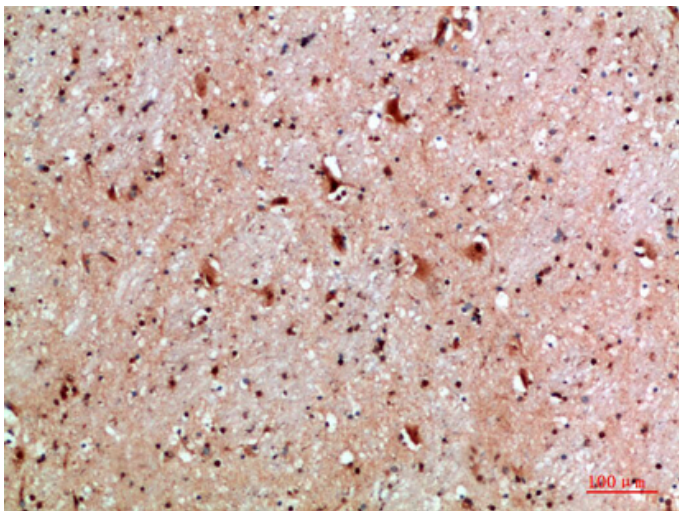


Immunohistochemical analysis of paraffin-embedded human-heart, antibody was diluted at 1:200

Immunohistochemical analysis of paraffin-embedded



human-brain, antibody was diluted at 1:200



Immunohistochemical analysis of paraffin-embedded human-brain, antibody was diluted at 1:200