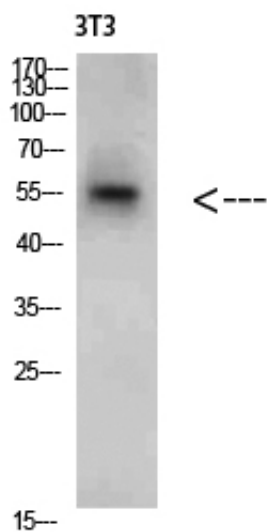


CREB3 Polyclonal Antibody

Catalog_no :	AT5803
Applications :	WB,ELISA
Reactivity :	Human,Mouse,Rat
Category :	抗原抗体
Size :	100µg/50µg/20µg
Gene_name :	CREB3
Protein_name :	CREB3
Humangene_id :	10488
Humanswissprot_no :	O43889
Immunogen :	The antiserum was produced against synthesized peptide derived from the Internal region of human CREB3. AA range:151-200
Specificity :	CREB3 Polyclonal Antibody detects endogenous levels of CREB3
Formulation :	Liquid in PBS containing 50% glycerol, 0.5% BSA and 0.02% sodium azide.
Source :	Rabbit
Dilution :	WB 1:500-2000, ELISA 1:10000-20000
Purification :	The antibody was affinity-purified from rabbit antiserum by affinity-chromatography using epitope-specific immunogen.
Concentration :	1 mg/ml
Storage_stability :	-20°C/1 year
Msds :	MSDS_Antibody.pdf
Other_name :	Cyclic AMP-responsive element-binding protein 3 (CREB-3) (cAMP-responsive element-binding protein 3) (Leucin zipper proitein) (Luman) (Transcription factor LZIP-alpha) [Cleaved into: Processed cyclic AMP-responsive element-binding protein 3 (N-terminal Luman) (Transcriptionally active form)]
Molecular Weight :	50KD

Product Images



Western Blot analysis of 3T3 cells using CREB3 Polyclonal Antibody diluted at 1:2000. Secondary antibody was diluted at 1:20000