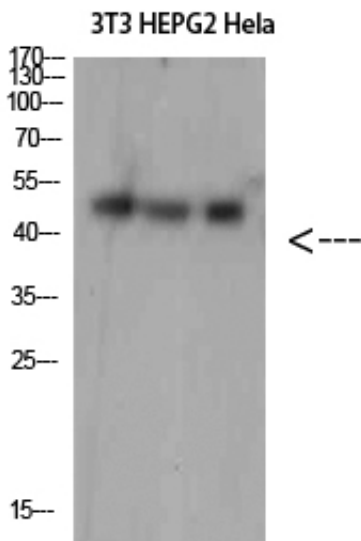




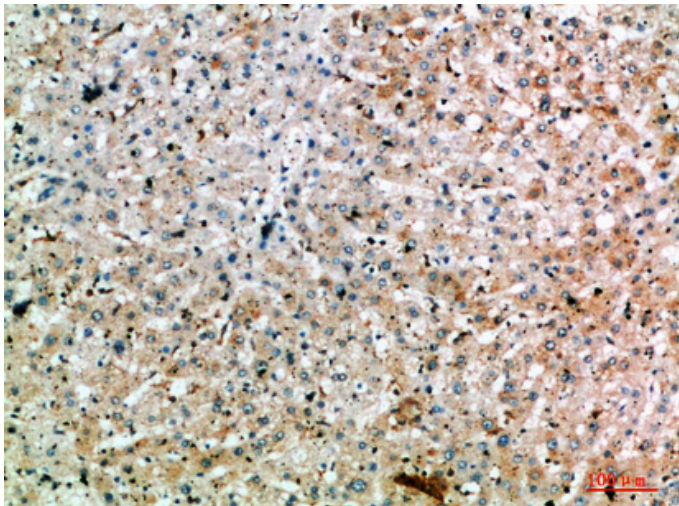
SPOP Polyclonal Antibody

Catalog_no :	<u>AT5804</u>
Applications :	<u>WB,ELISA</u>
Reactivity :	<u>Human,Mouse,Rat</u>
Category :	<u>抗原抗体</u>
Size :	<u>100µg/50µg/20µg</u>
Gene_name :	<u>SPOP</u>
Protein_name :	<u>SPOP</u>
Humangene_id :	<u>8405</u>
Humanswissprot_no :	<u>O43791</u>
Immunogen :	<u>The antiserum was produced against synthesized peptide derived from the Internal region of human SPOP. AA range:41-90</u>
Specificity :	<u>SPOP Polyclonal Antibody detects endogenous levels of SPOP</u>
Formulation :	<u>Liquid in PBS containing 50% glycerol, 0.5% BSA and 0.02% sodium azide.</u>
Source :	<u>Rabbit</u>
Dilution :	<u>WB 1:500-2000, ELISA 1:10000-20000</u>
Purification :	<u>The antibody was affinity-purified from rabbit antiserum by affinity-chromatography using epitope-specific immunogen.</u>
Concentration :	<u>1 mg/ml</u>
Storage_stability :	<u>-20°C/1 year</u>
Msds :	<u>MSDS_Antibody.pdf</u>
Other_name :	<u>Speckle-type POZ protein (HIB homolog 1) (Roadkill homolog 1)</u>
Molecular Weight :	<u>42KD</u>

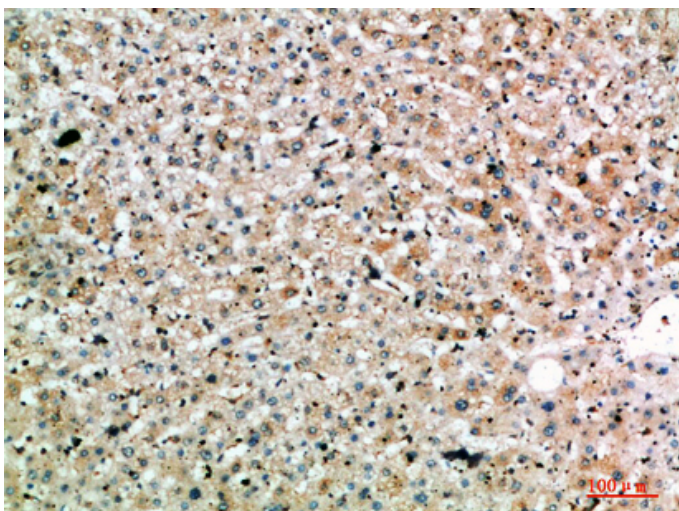
Product Images



Western Blot analysis of 3T3 HEPG2 Hela cells using SPOP Polyclonal Antibody diluted at 1:1500. Secondary antibody was diluted at 1:20000

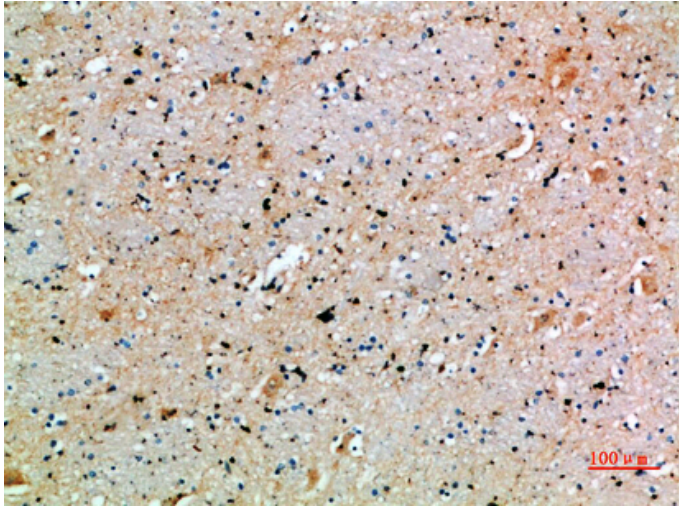


Immunohistochemical analysis of paraffin-embedded human-liver, antibody was diluted at 1:200

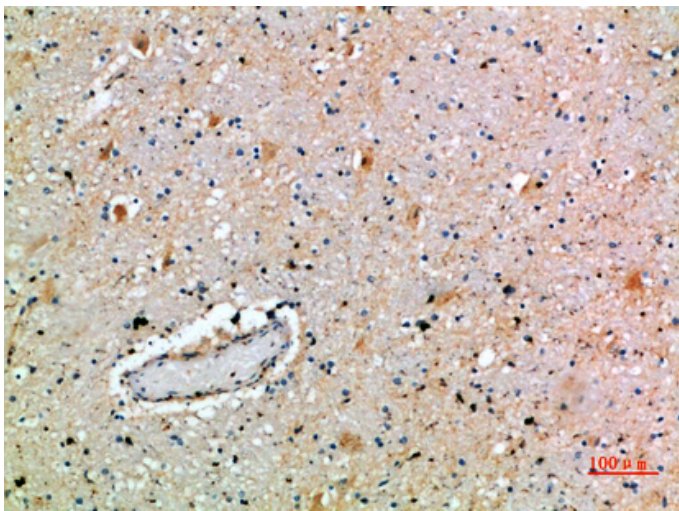


Immunohistochemical analysis of paraffin-embedded human-liver, antibody was diluted at 1:200

Immunohistochemical analysis of paraffin-embedded



human-brain, antibody was diluted at 1:200



Immunohistochemical analysis of paraffin-embedded human-brain, antibody was diluted at 1:200