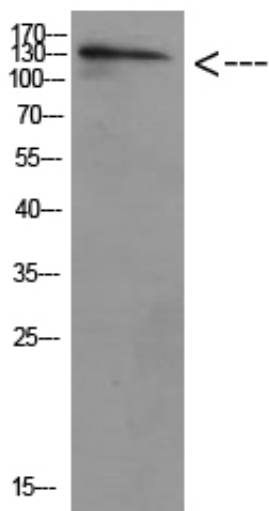




## ULK2 Polyclonal Antibody

Catalog_no :	AT5809
Applications :	WB,ELISA
Reactivity :	Human,Mouse,Rat
Category :	抗原抗体
Size :	100µg/50µg/20µg
Gene_name :	ULK2 KIAA0623
Protein_name :	unc-51-like kinase 2 (C. elegans)
Humangene_id :	<a href="#">9706</a>
Humanswissprot_no :	<a href="#">Q8IYT8</a>
Immunogen :	Synthetic peptide from human protein at AA range: 930-1000
Specificity :	The antibody detects endogenous ULK2 protein
Formulation :	Liquid in PBS containing 50% glycerol, 0.5% BSA and 0.02% sodium azide.
Source :	Rabbit
Dilution :	WB 1:500-2000, ELISA 1:10000-20000
Purification :	The antibody was affinity-purified from rabbit antiserum by affinity-chromatography using epitope-specific immunogen.
Concentration :	1 mg/ml
Storage_stability :	-20°C/1 year
Msds :	<a href="#">MSDS_Antibody.pdf</a>
Other_name :	ULK2 KIAA0623
Molecular Weight :	140KD

## Product Images



Western Blot analysis of HELA cells using Antibody diluted at 500. Secondary antibody was diluted at 1:20000