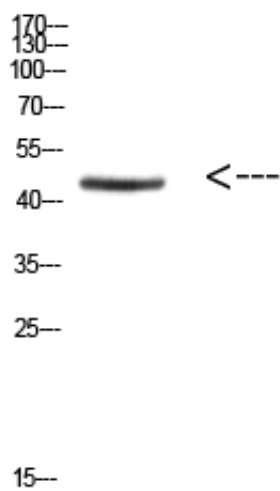




Ini1 Polyclonal Antibody

| | |
|---------------------|---|
| Catalog_no : | AT5812 |
| Applications : | WB,ELISA |
| Reactivity : | Human,Mouse,Rat |
| Category : | 抗原抗体 |
| Size : | 100µg/50µg/20µg |
| Gene_name : | SMARCB1 BAF47 INI1 SNF5L1 |
| Protein_name : | SWI/SNF related, matrix associated, actin dependent regulator of chromatin, subfamily b, member 1 |
| Humangene_id : | 6598 |
| Humanswissprot_no : | Q12824 |
| Immunogen : | Synthetic peptide from human protein at AA range: 331-380 |
| Specificity : | The antibody detects endogenous Ini1 protein |
| Formulation : | Liquid in PBS containing 50% glycerol, 0.5% BSA and 0.02% sodium azide. |
| Source : | Rabbit |
| Dilution : | WB 1:500-2000, ELISA 1:10000-20000 |
| Purification : | The antibody was affinity-purified from rabbit antiserum by affinity-chromatography using epitope-specific immunogen. |
| Concentration : | 1 mg/ml |
| Storage_stability : | -20°C/1 year |
| Msds : | MSDS_Antibody.pdf |
| Other_name : | SMARCB1 BAF47 INI1 SNF5L1 |
| Molecular Weight : | 45KD |

Product Images



Western Blot analysis of HEPG2 cells using Antibody diluted at 800. Secondary antibody was diluted at 1:20000