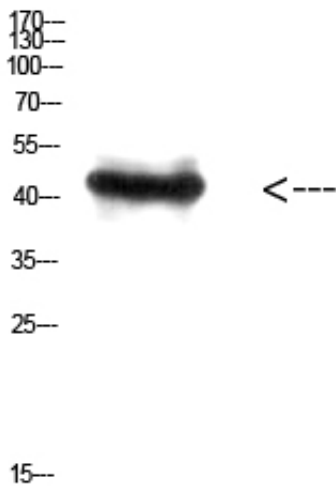


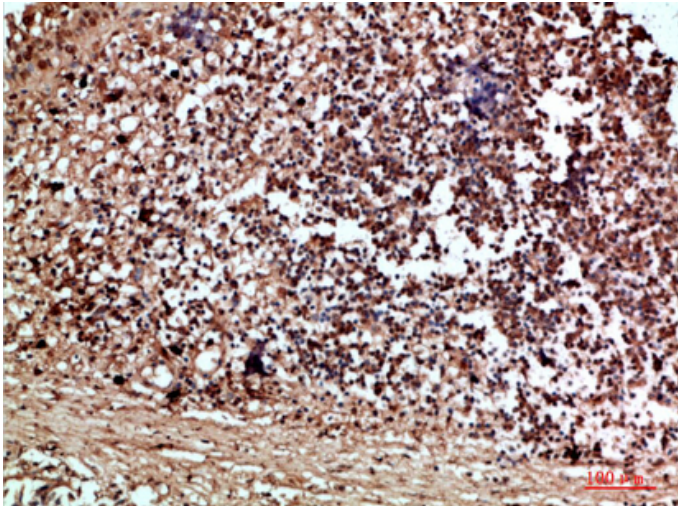
RCC1 Polyclonal Antibody

Catalog_no :	AT5814
Applications :	WB,ELISA
Reactivity :	Human,Mouse,Rat
Category :	抗原抗体
Size :	100µg/50µg/20µg
Gene_name :	RCC1 CHC1
Protein_name :	regulator of chromosome condensation 1; SNHG3-RCC1 readthrough transcript
Humangene_id :	1104
Humanswissprot_no :	P18754
Immunogen :	Synthetic peptide from human protein at AA range: 301-350
Specificity :	The antibody detects endogenous RCC1 protein
Formulation :	Liquid in PBS containing 50% glycerol, 0.5% BSA and 0.02% sodium azide.
Source :	Rabbit
Dilution :	WB 1:500-2000, ELISA 1:10000-20000
Purification :	The antibody was affinity-purified from rabbit antiserum by affinity-chromatography using epitope-specific immunogen.
Concentration :	1 mg/ml
Storage_stability :	-20°C/1 year
Msds :	MSDS_Antibody.pdf
Other_name :	RCC1 CHC1
Molecular Weight :	45KD

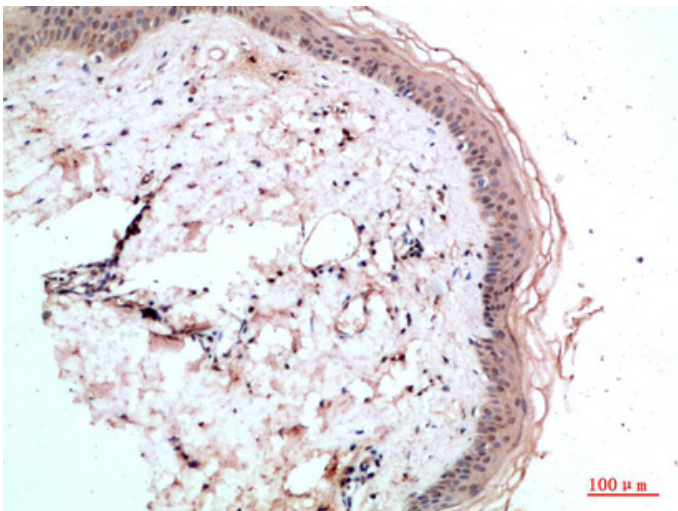
Product Images



Western Blot analysis of HEPG2 cells using Antibody diluted at 800. Secondary antibody was diluted at 1:20000



Immunohistochemical analysis of paraffin-embedded human-thyroid, antibody was diluted at 1:200



Immunohistochemical analysis of paraffin-embedded human-skin, antibody was diluted at 1:200



专注二抗产品

Biodragon旗下品牌
