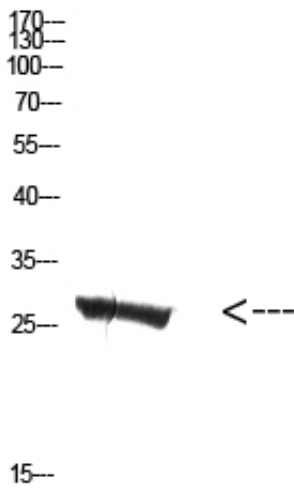




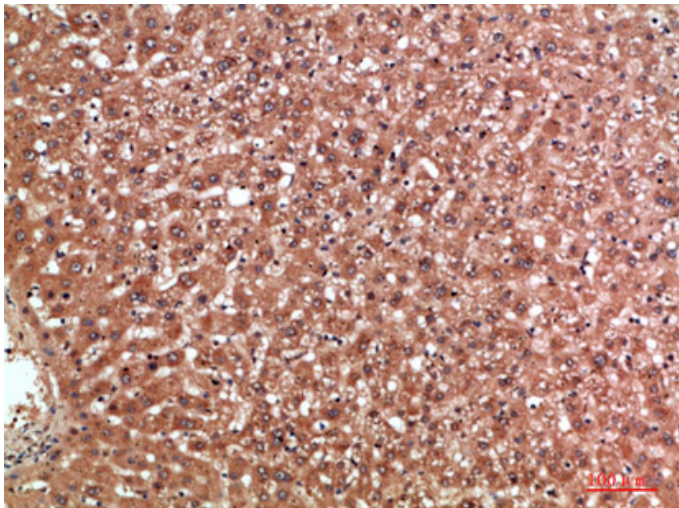
## MBL-C Polyclonal Antibody

Catalog_no :	AT5820
Applications :	WB,ELISA
Reactivity :	Human,Mouse
Category :	抗原抗体
Size :	100µg/50µg/20µg
Gene_name :	MBL2 COLEC1 MBL
Protein_name :	mannose-binding lectin (protein C) 2, soluble (opsonic defect)
Humangene_id :	<a href="#">4153</a>
Humanswissprot_no :	<a href="#">P11226</a>
Immunogen :	Synthetic peptide from human protein at AA range: 21-70
Specificity :	The antibody detects endogenous MBL-C protein
Formulation :	Liquid in PBS containing 50% glycerol, 0.5% BSA and 0.02% sodium azide.
Source :	Rabbit
Dilution :	WB 1:500-2000, ELISA 1:10000-20000
Purification :	The antibody was affinity-purified from rabbit antiserum by affinity-chromatography using epitope-specific immunogen.
Concentration :	1 mg/ml
Storage_stability :	-20°C/1 year
Msds :	<a href="#">MSDS_Antibody.pdf</a>
Other_name :	MBL2 COLEC1 MBL
Molecular Weight :	27KD

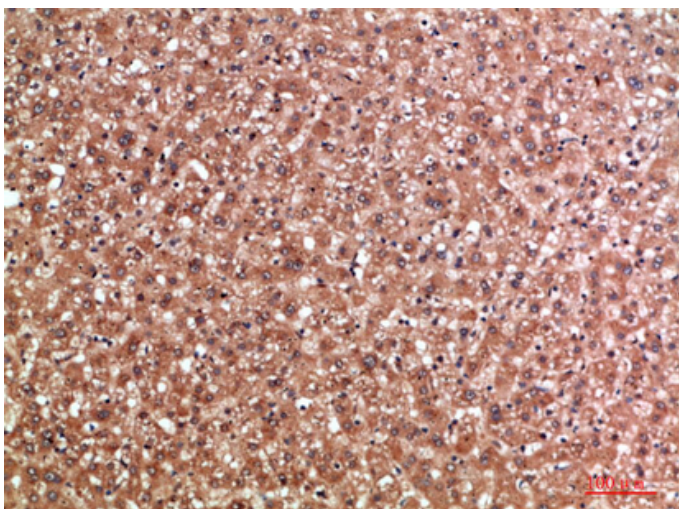
## Product Images



Western Blot analysis of mouse-kidney cells using Antibody diluted at 500. Secondary antibody was diluted at 1:20000

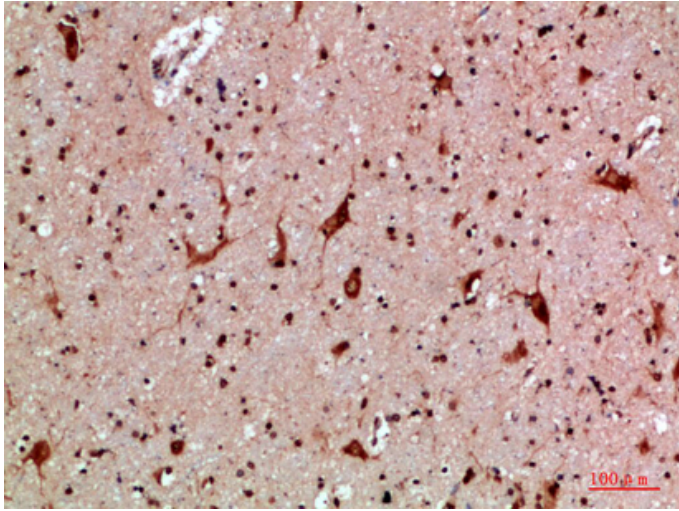


Immunohistochemical analysis of paraffin-embedded human-liver, antibody was diluted at 1:200

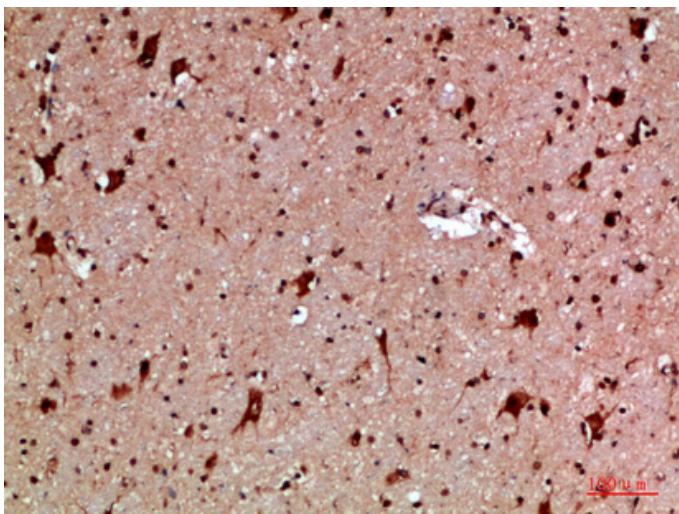


Immunohistochemical analysis of paraffin-embedded human-liver, antibody was diluted at 1:200

Immunohistochemical analysis of paraffin-embedded



human-brain, antibody was diluted at 1:200



Immunohistochemical analysis of paraffin-embedded human-brain, antibody was diluted at 1:200