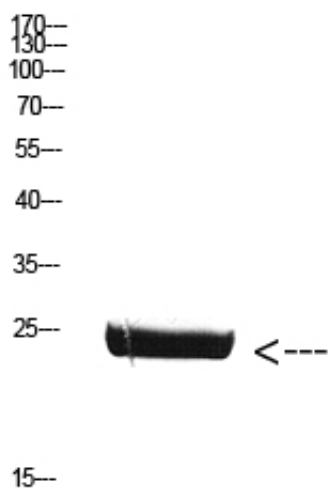


CSH1 Polyclonal Antibody

Catalog_no :	AT5821
Applications :	WB,IHC-p,ELISA
Reactivity :	Human
Category :	抗原抗体
Size :	100µg/50µg/20µg
Gene_name :	CSH1; CSH2
Protein_name :	chorionic somatomammotropin hormone 1 (placental lactogen)
Humangene_id :	1442
Humanswissprot_no :	P01243
Immunogen :	Synthetic peptide from human protein at AA range: 161-210
Specificity :	The antibody detects endogenous CSH1 protein
Formulation :	Liquid in PBS containing 50% glycerol, 0.5% BSA and 0.02% sodium azide.
Source :	Rabbit
Dilution :	IHC-p: 100-300.WB 1:500-2000, ELISA 1:10000-20000
Purification :	The antibody was affinity-purified from rabbit antiserum by affinity-chromatography using epitope-specific immunogen.
Concentration :	1 mg/ml
Storage_stability :	-20°C/1 year
Msds :	MSDS_Antibody.pdf
Other_name :	CSH1; CSH2
Molecular Weight :	25KD

Product Images



Western Blot analysis of mouse-brain cells using
Antibody diluted at 800. Secondary antibody was diluted
at 1:20000