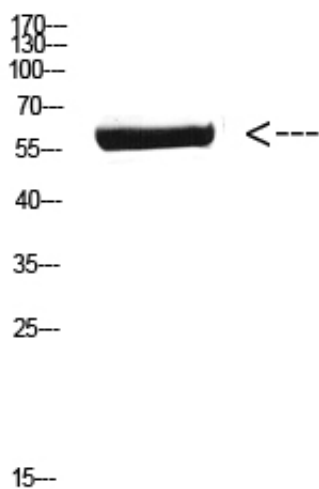




## CYP26B1 Polyclonal Antibody

Catalog_no :	AT5822
Applications :	WB,ELISA
Reactivity :	Human,Mouse,Rat
Category :	抗原抗体
Size :	100µg/50µg/20µg
Gene_name :	CYP26B1 CYP26A2 P450RAI2
Protein_name :	cytochrome P450, family 26, subfamily B, polypeptide 1
Humangene_id	<a href="#">56603</a>
:	
Humanswissprot	<a href="#">Q9NR63</a>
_no :	
Immunogen :	Synthetic peptide from human protein at AA range: 391-440
Specificity :	The antibody detects endogenous CYP26B1 protein
Formulation :	Liquid in PBS containing 50% glycerol, 0.5% BSA and 0.02% sodium azide.
Source :	Rabbit
Dilution :	WB 1:500-2000, ELISA 1:10000-20000
Purification :	The antibody was affinity-purified from rabbit antiserum by affinity-chromatography using epitope-specific immunogen.
Concentration :	1 mg/ml
Storage_stability	-20°C/1 year
:	
Msds :	MSDS_Antibody.pdf
Other_name :	CYP26B1 CYP26A2 P450RAI2
Molecular Weight :	60KD

## Product Images



Western Blot analysis of mouse-brain cells using  
Antibody diluted at 800. Secondary antibody was diluted  
at 1:20000