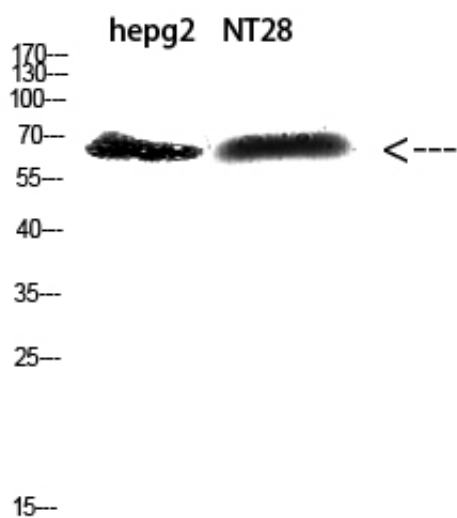




ZFP91 Polyclonal Antibody

Catalog_no :	AT5823
Applications :	WB,ELISA
Reactivity :	Human,Mouse,Rat
Category :	抗原抗体
Size :	100µg/50µg/20µg
Gene_name :	ZFP91 ZNF757 FKSG11
Protein_name :	zinc finger protein 91 homolog (mouse); ZFP91-CNTF readthrough transcript; ciliary neurotrophic factor
Humangene_id :	80829
Humanswissprot_no :	Q96JP5
Immunogen :	The antiserum was produced against synthesized peptide derived from the Internal region of human ZFP91. AA range:401-450
Specificity :	The antibody detects endogenous ZFP91 protein
Formulation :	Liquid in PBS containing 50% glycerol, 0.5% BSA and 0.02% sodium azide.
Source :	Rabbit
Dilution :	WB 1:500-2000, ELISA 1:10000-20000
Purification :	The antibody was affinity-purified from rabbit antiserum by affinity-chromatography using epitope-specific immunogen.
Concentration :	1 mg/ml
Storage_stability :	-20°C/1 year
Msds :	MSDS_Antibody.pdf
Other_name :	ZFP91 ZNF757 FKSG11
Molecular Weight :	60KD

Product Images



Western Blot analysis of hepg2, NT28 cells using
Antibody diluted at 500. Secondary antibody was diluted
at 1:20000