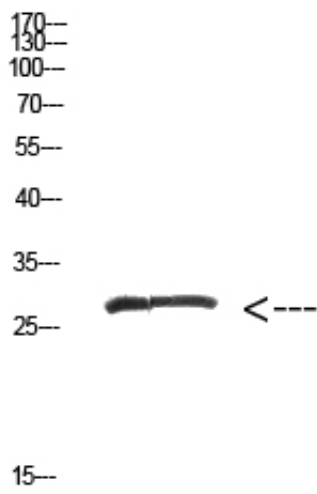




MYOZ2 Polyclonal Antibody

Catalog_no :	AT5827
Applications :	WB,ELISA
Reactivity :	Human,Mouse,Rat
Category :	抗原抗体
Size :	100µg/50µg/20µg
Gene_name :	MYOZ2 C4orf5
Protein_name :	myozenin 2
Humangene_id :	51778
Humanswissprot_no :	Q9NPC6
Immunogen :	The antiserum was produced against synthesized peptide derived from the Internal region of human MYOZ2. AA range:21-70
Specificity :	The antibody detects endogenous MYOZ2 protein
Formulation :	Liquid in PBS containing 50% glycerol, 0.5% BSA and 0.02% sodium azide.
Source :	Rabbit
Dilution :	WB 1:500-2000, ELISA 1:10000-20000
Purification :	The antibody was affinity-purified from rabbit antiserum by affinity-chromatography using epitope-specific immunogen.
Concentration :	1 mg/ml
Storage_stability :	-20°C/1 year
Msds :	MSDS_Antibody.pdf
Other_name :	MYOZ2 C4orf5
Molecular Weight :	30KD

Product Images



Western Blot analysis of hepg2 cells using Antibody diluted at 500. Secondary antibody was diluted at 1:20000