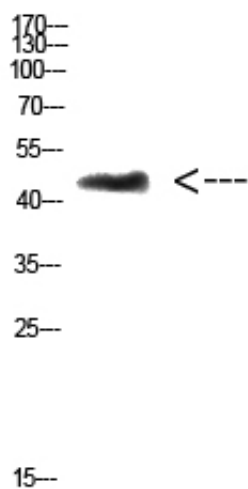


CHID1 Polyclonal Antibody

Catalog_no :	AT5831
Applications :	WB,ELISA
Reactivity :	Human,Mouse,Rat
Category :	抗原抗体
Size :	100µg/50µg/20µg
Gene_name :	CHID1 GL008 PSEC0104 SB139
Protein_name :	chitinase domain containing 1
Humangene_id :	66005
Humanswissprot_no :	Q9BWS9
Immunogen :	The antiserum was produced against synthesized peptide derived from the Internal region of human CHID1. AA range:81-130
Specificity :	The antibody detects endogenous CHID1 protein
Formulation :	Liquid in PBS containing 50% glycerol, 0.5% BSA and 0.02% sodium azide.
Source :	Rabbit
Dilution :	WB 1:500-2000, ELISA 1:10000-20000
Purification :	The antibody was affinity-purified from rabbit antiserum by affinity-chromatography using epitope-specific immunogen.
Concentration :	1 mg/ml
Storage_stability :	-20°C/1 year
Msds :	MSDS_Antibody.pdf
Other_name :	CHID1 GL008 PSEC0104 SB139
Molecular Weight :	45KD

Product Images



Western Blot analysis of 3T3 cells using Antibody diluted at 500. Secondary antibody was diluted at 1:20000