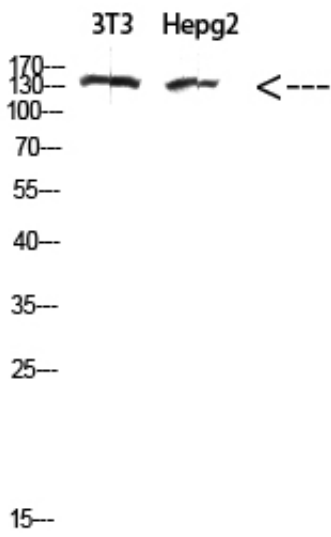


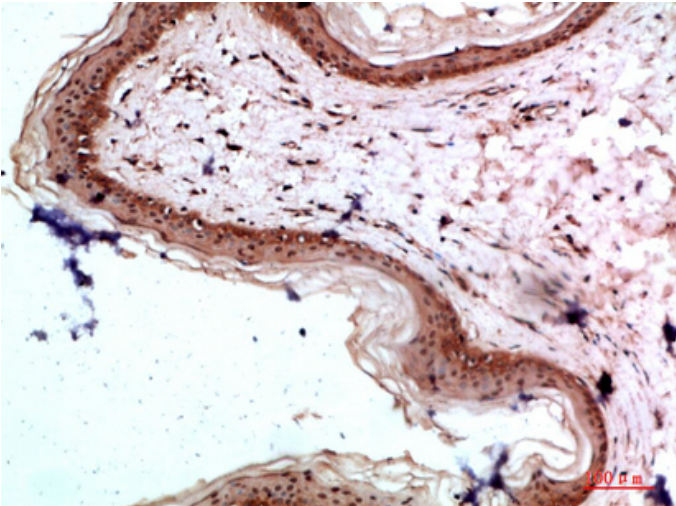
## COL17A1 Polyclonal Antibody

Catalog_no :	<u>AT5832</u>
Applications :	<u>WB,ELISA</u>
Reactivity :	<u>Human</u>
Category :	<u>抗原抗体</u>
Size :	<u>100µg/50µg/20µg</u>
Gene_name :	<u>COL17A1 BP180 BPAG2</u>
Protein_name :	<u>collagen, type XVII, alpha 1</u>
Humangene_id :	<u><a href="#">1308</a></u>
Humanswissprot_no :	<u><a href="#">Q9UMD9</a></u>
Immunogen :	<u>The antiserum was produced against synthesized peptide derived from the Internal region of human COL17A1. AA range:481-530</u>
Specificity :	<u>The antibody detects endogenous COL17A1 protein</u>
Formulation :	<u>Liquid in PBS containing 50% glycerol, 0.5% BSA and 0.02% sodium azide.</u>
Source :	<u>Rabbit</u>
Dilution :	<u>WB 1:500-2000, ELISA 1:10000-20000</u>
Purification :	<u>The antibody was affinity-purified from rabbit antiserum by affinity-chromatography using epitope-specific immunogen.</u>
Concentration :	<u>1 mg/ml</u>
Storage_stability :	<u>-20°C/1 year</u>
Msds :	<u>MSDS_Antibody.pdf</u>
Other_name :	<u>COL17A1 BP180 BPAG2</u>
Molecular Weight :	<u>150KD</u>

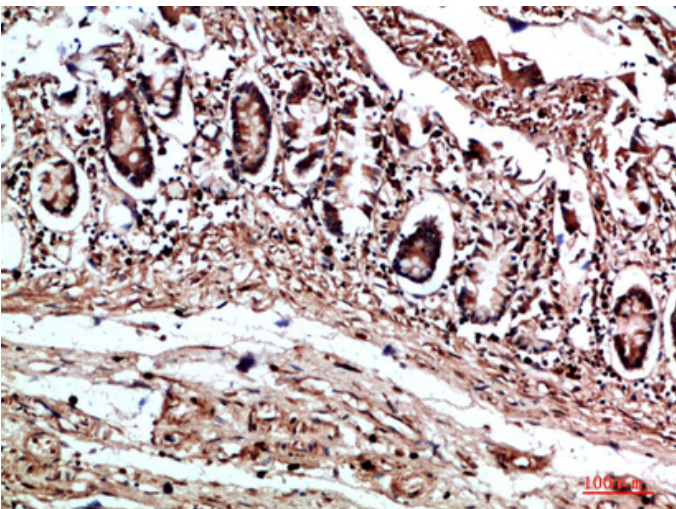
## Product Images



Western Blot analysis of 3T3, hepg2 cells using Antibody diluted at 500. Secondary antibody was diluted at 1:20000



Immunohistochemical analysis of paraffin-embedded human-skin, antibody was diluted at 1:200



Immunohistochemical analysis of paraffin-embedded human-colon, antibody was diluted at 1:200



**专注二抗产品**

Biodragon旗下品牌

---