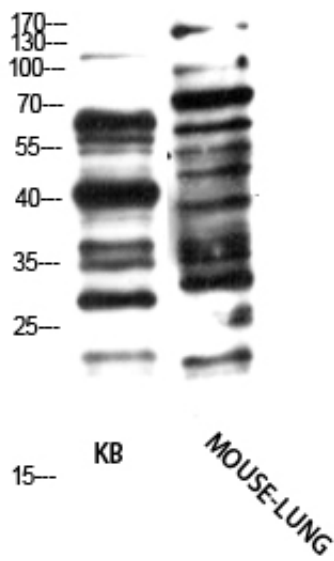




## Pan myristoylation Polyclonal Antibody

Catalog_no :	AT5835
Applications :	WB,ELISA
Reactivity :	ALL
Category :	抗原抗体
Size :	100µg/50µg/20µg
Immunogen :	Synthetic myristoylated peptide
Specificity :	The antibody detects endogenous myristoylated protein
Formulation :	Liquid in PBS containing 50% glycerol, 0.5% BSA and 0.02% sodium azide.
Source :	Rabbit
Dilution :	WB 1:500-2000, ELISA 1:10000-20000
Purification :	The antibody was affinity-purified from rabbit antiserum by affinity-chromatography using epitope-specific immunogen.
Concentration :	1 mg/ml
Storage_stability :	-20°C/1 year
Msds :	MSDS_Antibody.pdf
Molecular Weight :	130 80 35KD

## Product Images



Western Blot analysis of KB, MOUSE-LUNG cells using Antibody diluted at 1000. Secondary antibody was diluted at 1:20000