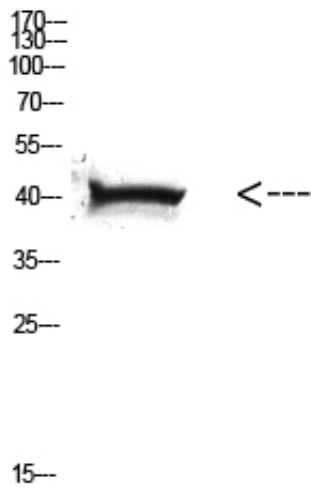




HLA Class I Polyclonal Antibody

Catalog_no :	AT5837
Applications :	WB,ELISA
Reactivity :	Human
Category :	抗原抗体
Size :	100µg/50µg/20µg
Gene_name :	HLA-A HLAA
Protein_name :	major histocompatibility complex, class I
Humanswissprot_no :	P01891/P01892/P04439/P05534/P10314/P10316/P13746/P16189/P18462/P30443/P30450/P30453/P30455/P30456/P30457/P30512/Q09160
Immunogen :	The antiserum was produced against synthesized peptide derived from human HLA Class I. AA range:204-253
Specificity :	The antibody detects endogenous HLA Class I protein
Formulation :	Liquid in PBS containing 50% glycerol, 0.5% BSA and 0.02% sodium azide.
Source :	Rabbit
Dilution :	WB 1:500-2000, ELISA 1:10000-20000
Purification :	The antibody was affinity-purified from rabbit antiserum by affinity-chromatography using epitope-specific immunogen.
Concentration :	1 mg/ml
Storage_stability :	-20°C/1 year
Msds :	MSDS_Antibody.pdf
Other_name :	HLA-A HLAA
Molecular Weight :	40KD

Product Images



Western Blot analysis of HELA cells using Antibody diluted at 500. Secondary antibody was diluted at 1:20000