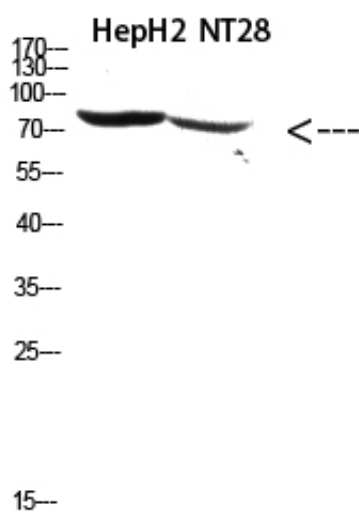




## RSK3 Polyclonal Antibody

Catalog_no :	AT5839
Applications :	WB,ELISA
Reactivity :	Human,Mouse
Category :	抗原抗体
Size :	100µg/50µg/20µg
Gene_name :	RPS6KA2 MAPKAPK1C RSK3
Protein_name :	ribosomal protein S6 kinase, 90kDa, polypeptide 2; hypothetical LOC100127984
Humangene_id	<a href="#">6196</a>
:	
Humanswissprot	<a href="#">Q15349</a>
_no :	
Immunogen :	Synthetic peptide from human protein at AA range: 330-400
Specificity :	The antibody detects endogenous RSK3 protein
Formulation :	Liquid in PBS containing 50% glycerol, 0.5% BSA and 0.02% sodium azide.
Source :	Rabbit
Dilution :	WB 1:500-2000, ELISA 1:10000-20000
Purification :	The antibody was affinity-purified from rabbit antiserum by affinity-chromatography using epitope-specific immunogen.
Concentration :	1 mg/ml
Storage_stability	-20°C/1 year
:	
Msds :	MSDS_Antibody.pdf
Other_name :	RPS6KA2 MAPKAPK1C RSK3
Molecular Weight :	80KD

## Product Images



Western Blot analysis of hepg2, NT28 cells using  
Antibody diluted at 500. Secondary antibody was diluted  
at 1:20000