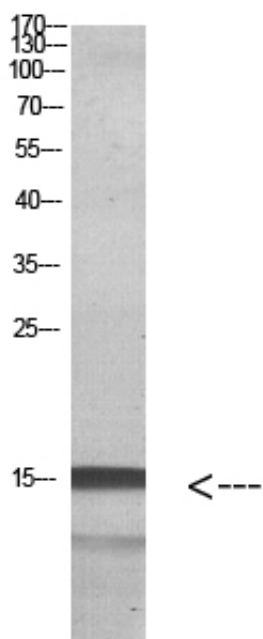




Histone H2A.Z Polyclonal Antibody

Catalog_no :	AT5842
Applications :	WB,ELISA
Reactivity :	Human,Mouse,Rat
Category :	抗原抗体
Size :	100µg/50µg/20µg
Gene_name :	H2AFZ H2AZ
Protein_name :	Histone H2A.Z (H2A/z)
Humangene_id :	3015
Humanswissprot_no :	POC055
Immunogen :	Synthetic peptide from human protein at AA range: 1-30
Specificity :	The antibody detects endogenous Histone H2A.Z
Formulation :	Liquid in PBS containing 50% glycerol, 0.5% BSA and 0.02% sodium azide.
Source :	Rabbit
Dilution :	WB 1:500-2000, ELISA 1:10000-20000
Purification :	The antibody was affinity-purified from rabbit antiserum by affinity-chromatography using epitope-specific immunogen.
Concentration :	1 mg/ml
Storage_stability :	-20°C/1 year
Msds :	MSDS_Antibody.pdf
Other_name :	Histone H2A.Z (H2A/z)
Molecular Weight :	20KD

Product Images



Western blot analysis of HELA Cell Lysate using antibody. Secondary antibody was diluted at 1:20000 cells nucleus extracted by Minute TM Cytoplasmic and Nuclear Fractionation kit (SC-003, Inventbiotech, MN, USA).