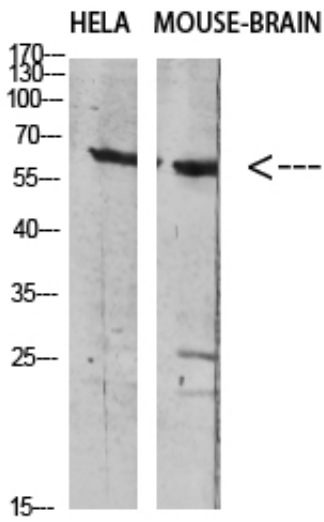


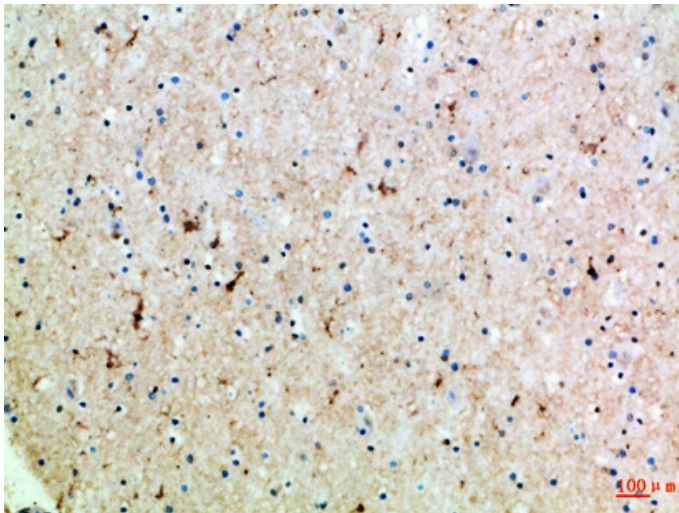
GABA T-1 Polyclonal Antibody

Catalog_no :	AT5844
Applications :	WB,ELISA
Reactivity :	Human,Mouse,Rat
Category :	抗原抗体
Size :	100µg/50µg/20µg
Gene_name :	SLC6A1 GABATR GABT1 GAT1
Protein_name :	Sodium- and chloride-dependent GABA transporter 1 (GAT-1) (Solute carrier family 6 member 1)
Humangene_id :	6529
Humanswissprot_no :	P30531
Immunogen :	The antiserum was produced against synthesized peptide derived from the Internal region of human SLC6A1. AA range:170-220
Specificity :	The antibody detects endogenous GABA T-1
Formulation :	Liquid in PBS containing 50% glycerol, 0.5% BSA and 0.02% sodium azide.
Source :	Rabbit
Dilution :	WB 1:500-2000, ELISA 1:10000-20000
Purification :	The antibody was affinity-purified from rabbit antiserum by affinity-chromatography using epitope-specific immunogen.
Concentration :	1 mg/ml
Storage_stability :	-20°C/1 year
Msds :	MSDS_Antibody.pdf
Other_name :	Sodium- and chloride-dependent GABA transporter 1 (GAT-1) (Solute carrier family 6 member 1)
Molecular Weight :	50KD

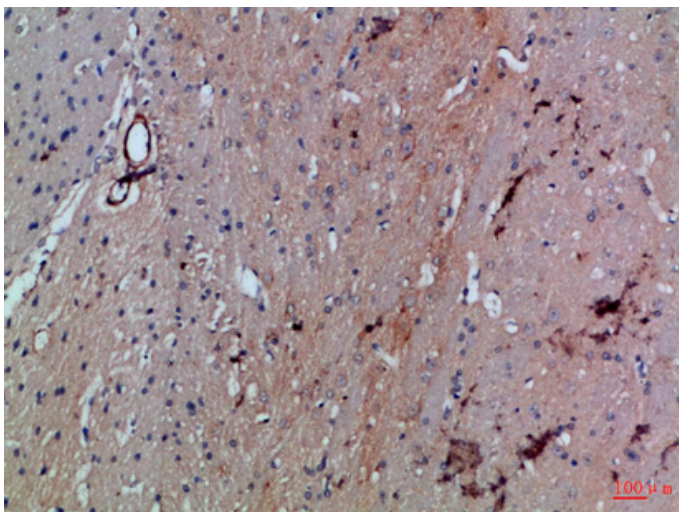
Product Images



Western blot analysis of HELA MOUSE-BRAIN Cell Lysate using antibody. Secondary antibody was diluted at 1:20000



Immunohistochemical analysis of paraffin-embedded Human-brain, antibody was diluted at 1:100



Immunohistochemical analysis of paraffin-embedded Rat-brain, antibody was diluted at 1:100



专注二抗产品

Biodragon旗下品牌
