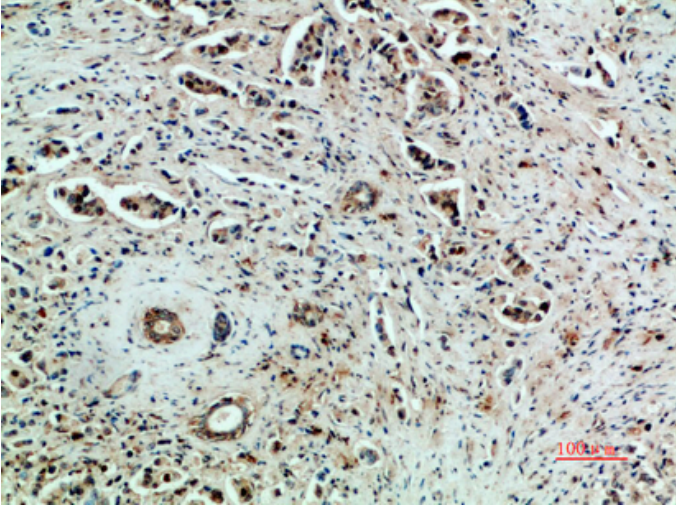


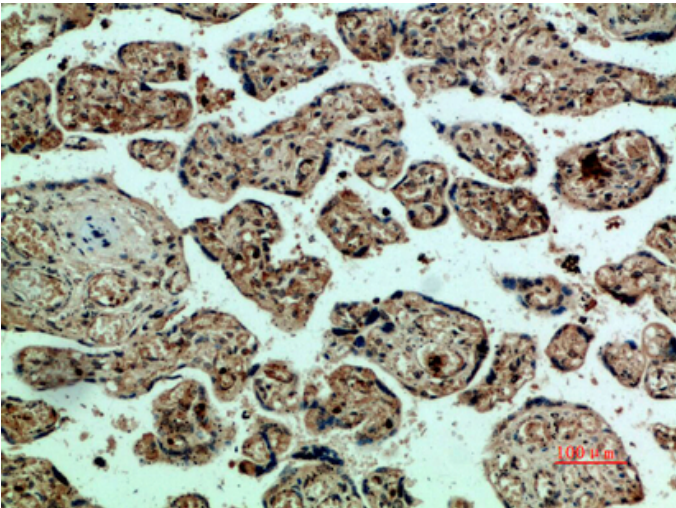
## VEGFR2 Polyclonal Antibody

Catalog_no :	AT5845
Applications :	IHC-p,ELISA
Reactivity :	Human,Rat,Mouse
Category :	抗原抗体
Size :	100µg/50µg/20µg
Gene_name :	KDR FLK1 VEGFR2
Protein_name :	VEGFR2
Humangene_id :	<a href="#">3791</a>
Humanswissprot_no :	<a href="#">P35968</a>
Immunogen :	Synthetic peptide from human protein at AA range: 1268-1341
Specificity :	The antibody detects endogenous VEGFR2
Formulation :	Liquid in PBS containing 50% glycerol, 0.5% BSA and 0.02% sodium azide.
Source :	Rabbit
Dilution :	IHC-p 1:50-200, ELISA 1:10000-20000
Purification :	The antibody was affinity-purified from rabbit antiserum by affinity-chromatography using epitope-specific immunogen.
Concentration :	1 mg/ml
Storage_stability :	-20°C/1 year
Msds :	MSDS_Antibody.pdf
Other_name :	Vascular endothelial growth factor receptor 2 (VEGFR-2) (EC 2.7.10.1) (Fetal liver kinase 1) (FLK-1) (Kinase insert domain receptor) (KDR) (Protein-tyrosine kinase receptor flk-1) (CD antigen CD309)

## Product Images



Immunohistochemical analysis of paraffin-embedded human-breast-cancer, antibody was diluted at 1:200



Immunohistochemical analysis of paraffin-embedded human-placenta, antibody was diluted at 1:200