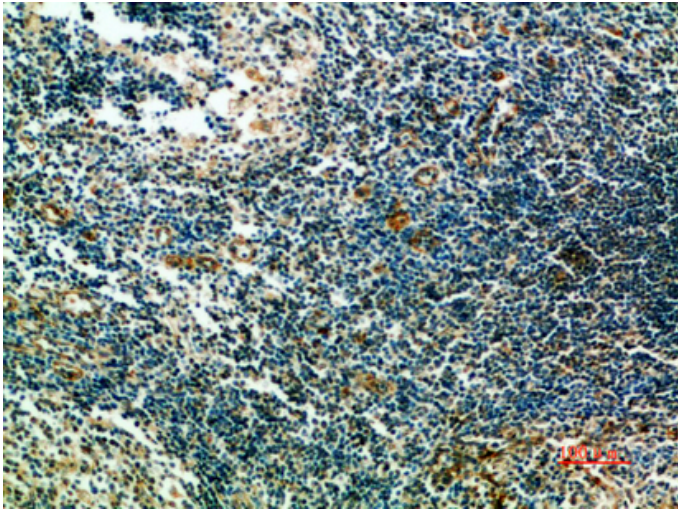


ST6GAL1 Polyclonal Antibody

Catalog_no :	AT5847
Applications :	IHC-p,ELISA
Reactivity :	Human,Rat,Mouse
Category :	抗原抗体
Size :	100µg/50µg/20µg
Gene_name :	ST6GAL1 SIAT1
Protein_name :	ST6GAL1
Humangene_id :	6480
Humanswissprot_no :	P15907
Immunogen :	Synthetic peptide from human protein at AA range: 63-135
Specificity :	The antibody detects endogenous ST6GAL1
Formulation :	Liquid in PBS containing 50% glycerol, 0.5% BSA and 0.02% sodium azide.
Source :	Rabbit
Dilution :	IHC-p 1:50-200, ELISA 1:10000-20000
Purification :	The antibody was affinity-purified from rabbit antiserum by affinity-chromatography using epitope-specific immunogen.
Concentration :	1 mg/ml
Storage_stability :	-20°C/1 year
Msds :	MSDS_Antibody.pdf
Other_name :	Beta-galactoside alpha-2,6-sialyltransferase 1 (Alpha 2,6-ST 1) (EC 2.4.99.1) (B-cell antigen CD75) (CMP-N-acetylneuraminase-beta-galactosamide-alpha-2,6-sialyltransferase 1) (ST6Gal I) (ST6GalII) (Sialyltransferase 1)

Product Images



Immunohistochemical analysis of paraffin-embedded human-tonsils, antibody was diluted at 1:200