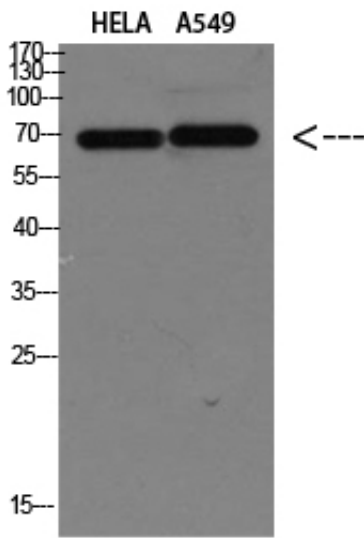


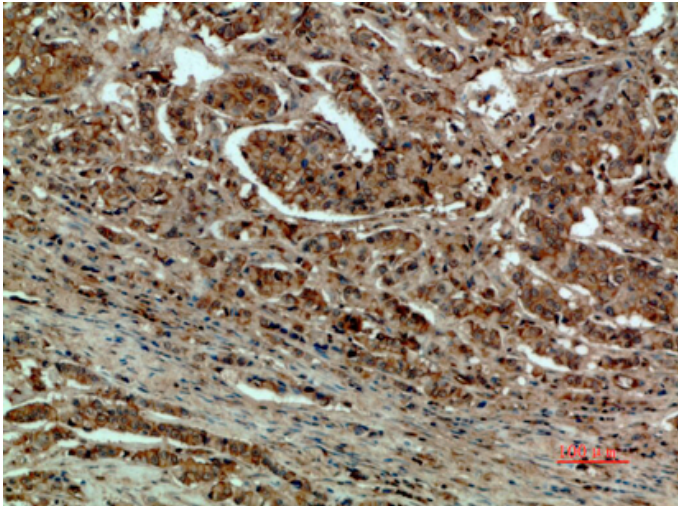
DCT Polyclonal Antibody

Catalog_no :	AT5849
Applications :	WB,IHC-p,ELISA
Reactivity :	Human,Rat,Mouse
Category :	抗原抗体
Size :	100µg/50µg/20µg
Gene_name :	DCT TYRP2
Protein_name :	DCT
Humangene_id :	1638
Humanswissprot_no :	P40126
Immunogen :	Synthetic peptide from human protein at AA range: 232-304
Specificity :	The antibody detects endogenous DCT
Formulation :	Liquid in PBS containing 50% glycerol, 0.5% BSA and 0.02% sodium azide.
Source :	Rabbit
Dilution :	WB 1:500-2000,IHC-p 1:500-200, ELISA 1:10000-20000
Purification :	The antibody was affinity-purified from rabbit antiserum by affinity-chromatography using epitope-specific immunogen.
Concentration :	1 mg/ml
Storage_stability :	-20°C/1 year
Msds :	MSDS_Antibody.pdf
Other_name :	L-dopachrome tautomerase (DCT) (DT) (EC 5.3.3.12) (L-dopachrome Delta-isomerase) (Tyrosinase-related protein 2) (TRP-2) (TRP2)
Molecular Weight :	59KD

Product Images



Western blot analysis of HELA A549 Cell Lysate, antibody was diluted at 1:1000. Secondary antibody was diluted at 1:20000



Immunohistochemical analysis of paraffin-embedded human-breast-cancer, antibody was diluted at 1:200