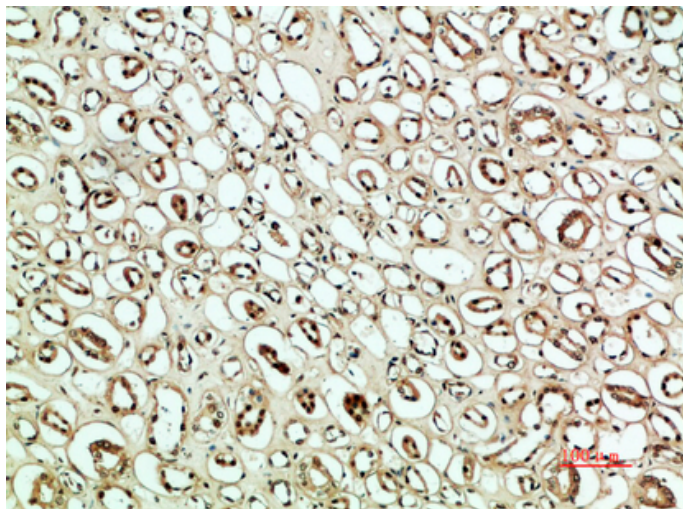


PLK2 Polyclonal Antibody

Catalog_no :	<u>AT5854</u>
Applications :	<u>IHC-p,ELISA</u>
Reactivity :	<u>Human,Rat</u>
Category :	<u>抗原抗体</u>
Size :	<u>100µg/50µg/20µg</u>
Gene_name :	<u>PLK2 SNK</u>
Protein_name :	<u>PLK2</u>
Humangene_id :	<u>10769</u>
Humanswissprot_no :	<u>Q9NYY3</u>
Immunogen :	<u>Synthetic peptide from human protein at AA range: 377-451</u>
Specificity :	<u>The antibody detects endogenous PLK2</u>
Formulation :	<u>Liquid in PBS containing 50% glycerol, 0.5% BSA and 0.02% sodium azide.</u>
Source :	<u>Rabbit</u>
Dilution :	<u>IHC-p 1:50-200, ELISA 1:10000-20000</u>
Purification :	<u>The antibody was affinity-purified from rabbit antiserum by affinity-chromatography using epitope-specific immunogen.</u>
Concentration :	<u>1 mg/ml</u>
Storage_stability :	<u>-20°C/1 year</u>
Msds :	<u>MSDS_Antibody.pdf</u>
Other_name :	<u>Serine/threonine-protein kinase PLK2 (EC 2.7.11.21) (Polo-like kinase 2) (PLK-2) (hPlk2) (Serine/threonine-protein kinase SNK) (hSNK) (Serum-inducible kinase)</u>

Product Images



Immunohistochemical analysis of paraffin-embedded human-kidney, antibody was diluted at 1:200