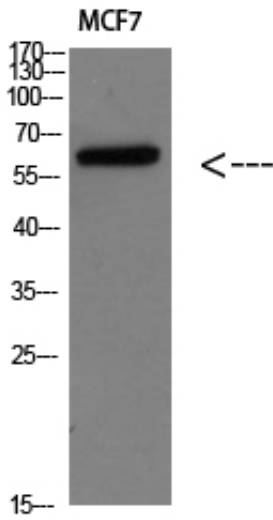


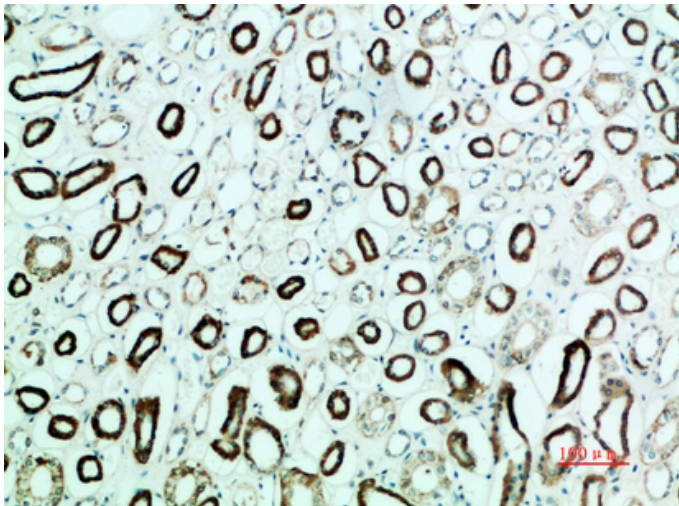
Parathyroid hormone/parathyroid hormone-related peptide receptor Polyclonal Antibody

Catalog_no :	AT5856
Applications :	WB,IHC-p,ELISA
Reactivity :	Human
Category :	抗原抗体
Size :	100µg/50µg/20µg
Gene_name :	PTH1R PTHR PTHR1
Protein_name :	Parathyroid hormone/parathyroid hormone-related peptide receptor
Humangene_id	5745
:	
Humanswissprot	Q03431
_no :	
Immunogen :	Synthetic peptide from human protein at AA range: 46-122
Specificity :	The antibody detects endogenous Parathyroid hormone/parathyroid hormone-related peptide receptor
Formulation :	Liquid in PBS containing 50% glycerol, 0.5% BSA and 0.02% sodium azide.
Source :	Rabbit
Dilution :	WB 1:500-2000,IHC-p 1:500-200, ELISA 1:10000-20000
Purification :	The antibody was affinity-purified from rabbit antiserum by affinity-chromatography using epitope-specific immunogen.
Concentration :	1 mg/ml
Storage_stability	-20°C/1 year
:	
Msds :	MSDS_Antibody.pdf
Other_name :	Parathyroid hormone/parathyroid hormone-related peptide receptor (PTH/PTHrP type I receptor) (PTH/PTHr receptor) (Parathyroid hormone 1 receptor) (PTH1 receptor)
Molecular Weight :	66KD

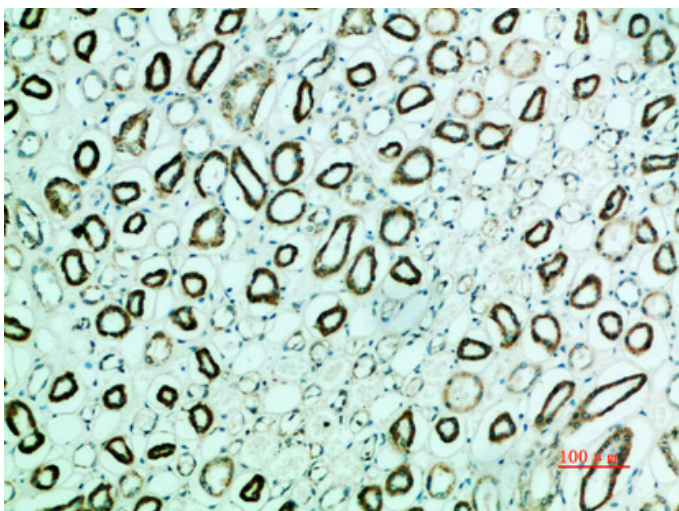
Product Images



Western blot analysis of MCF7 Cell Lysate, antibody was diluted at 1:1000. Secondary antibody was diluted at 1:20000



Immunohistochemical analysis of paraffin-embedded human kidney, antibody was diluted at 1:200



Immunohistochemical analysis of paraffin-embedded human kidney, antibody was diluted at 1:200



专注二抗产品

Biodragon旗下品牌
