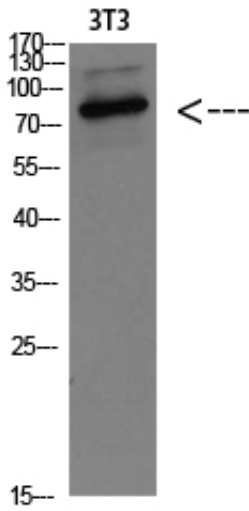




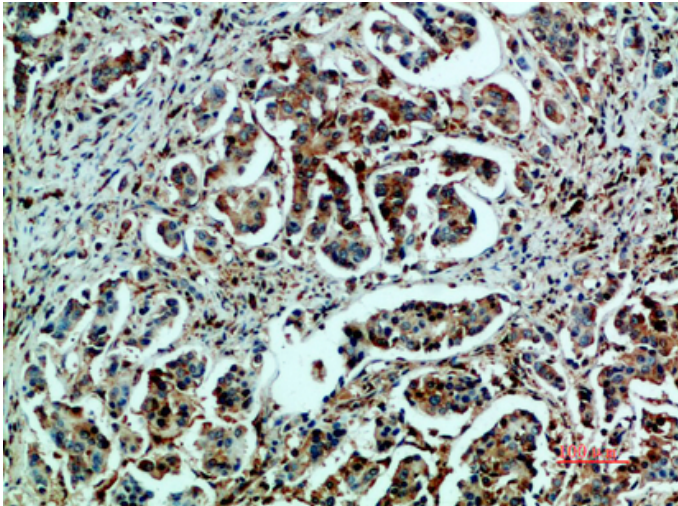
## GRP78 BiP Polyclonal Antibody

Catalog_no :	AT5858
Applications :	WB,IHC-p,ELISA
Reactivity :	Human,Mouse,Rat
Category :	抗原抗体
Size :	100µg/50µg/20µg
Gene_name :	HSPA5 GRP78
Protein_name :	GRP78 BiP
Humangene_id :	<a href="#">3309</a>
Humanswissprot_no :	<a href="#">P11021</a>
Immunogen :	Synthetic peptide from human protein at AA range: 505-570
Specificity :	The antibody detects endogenous GRP78 BiP
Formulation :	Liquid in PBS containing 50% glycerol, 0.5% BSA and 0.02% sodium azide.
Source :	Rabbit
Dilution :	WB 1:500-2000,IHC-p 1:500-200, ELISA 1:10000-20000
Purification :	The antibody was affinity-purified from rabbit antiserum by affinity-chromatography using epitope-specific immunogen.
Concentration :	1 mg/ml
Storage_stability :	-20°C/1 year
Msds :	MSDS_Antibody.pdf
Other_name :	78 kDa glucose-regulated protein (GRP-78) (Endoplasmic reticulum luminal Ca(2+)-binding protein grp78) (Heat shock 70 kDa protein 5) (Immunoglobulin heavy chain-binding protein) (BiP)
Molecular Weight :	78KD

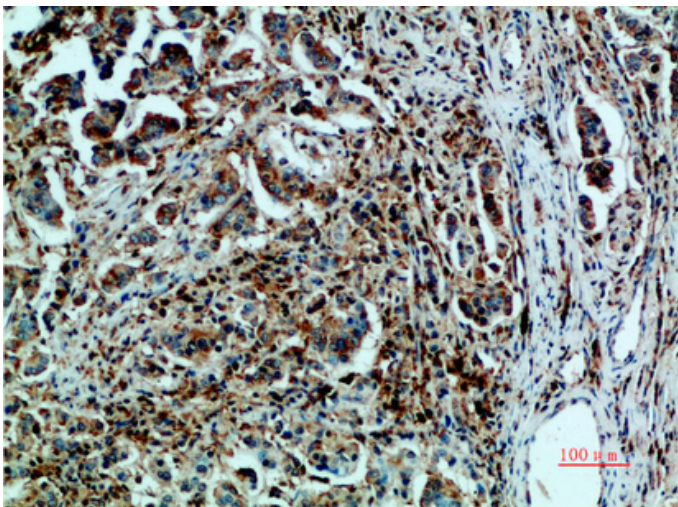
## Product Images



Western blot analysis of 3T3 Cell Lysate, antibody was diluted at 1:1000. Secondary antibody was diluted at 1:20000

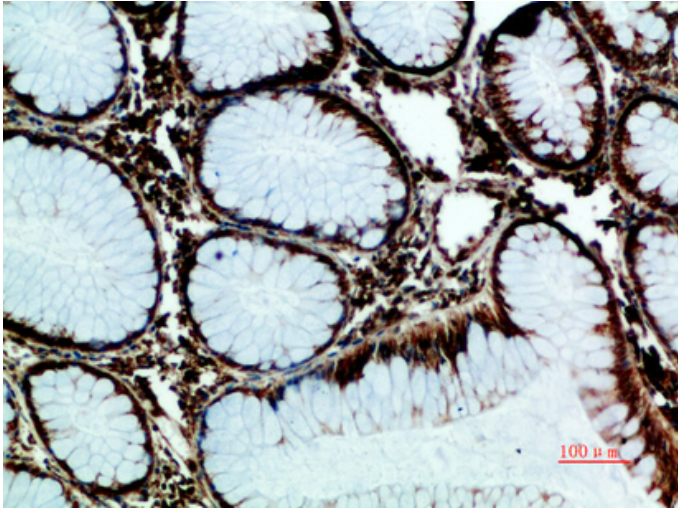


Immunohistochemical analysis of paraffin-embedded human breast cancer, antibody was diluted at 1:200

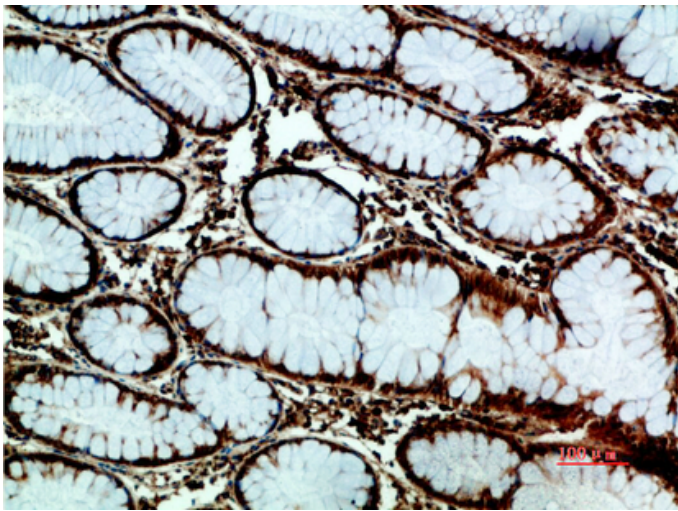


Immunohistochemical analysis of paraffin-embedded human breast cancer, antibody was diluted at 1:200

Immunohistochemical analysis of paraffin-embedded



human-colon-cancer, antibody was diluted at 1:200



Immunohistochemical analysis of paraffin-embedded human-colon-cancer, antibody was diluted at 1:200