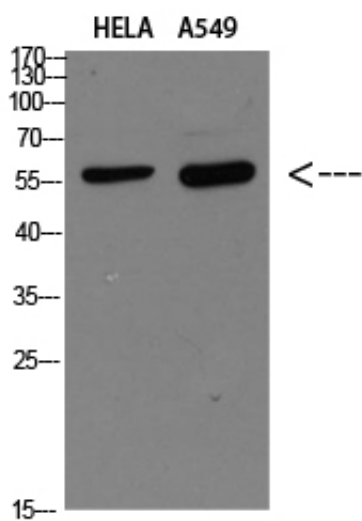




## DCT Polyclonal Antibody

Catalog_no :	<u>AT5859</u>
Applications :	<u>WB,ELISA</u>
Reactivity :	<u>Human,Mouse,(93%)</u>
Category :	<u>抗原抗体</u>
Size :	<u>100µg/50µg/20µg</u>
Gene_name :	<u>DCT TYRP2</u>
Protein_name :	<u>DCT</u>
Humangene_id	<u><a href="#">1638</a></u>
:	<u></u>
Humanswissprot	<u><a href="#">P40126</a></u>
_no :	<u></u>
Immunogen :	<u>Synthetic peptide from human protein at AA range: 171-244</u>
Specificity :	<u>The antibody detects endogenous DCT</u>
Formulation :	<u>Liquid in PBS containing 50% glycerol, 0.5% BSA and 0.02% sodium azide.</u>
Source :	<u>Rabbit</u>
Dilution :	<u>WB 1:500-2000, ELISA 1:10000-20000</u>
Purification :	<u>The antibody was affinity-purified from rabbit antiserum by affinity-chromatography using epitope-specific immunogen.</u>
Concentration :	<u>1 mg/ml</u>
Storage_stability	<u>-20°C/1 year</u>
:	<u></u>
Msds :	<u>MSDS_Antibody.pdf</u>
Other_name :	<u>L-dopachrome tautomerase (DCT) (DT) (EC 5.3.3.12) (L-dopachrome Delta-isomerase) (Tyrosinase-related protein 2) (TRP-2) (TRP2)</u>
Molecular Weight :	<u>59KD</u>

## Product Images



Western blot analysis of HELA A549 Cell Lysate, antibody was diluted at 1:1000. Secondary antibody was diluted at 1:20000